

# KIS Unistats output file and check documentation definitions

Version 1.4 Produced 2013-09-26

## Introduction

Unistats, which incorporates the KIS, provides course level information on all undergraduate higher education courses provided in the UK, which are of at least one year's duration and consist of 120 or more credits of study. Full details of the Unistats' coverage are provided at [www.hesa.ac.uk/c13061/coverage](http://www.hesa.ac.uk/c13061/coverage).

The Unistats dataset consists of information provided directly by higher education institutions (HEIs) and further education colleges (FECs) who offer courses of higher education. These data have been joined to a variety of sources including the Destinations of Leavers survey (to provide information on employment outcomes) and the National Student Survey (to provide information on student satisfaction). The Unistats dataset is used to populate the Unistats widgets, which institutions display on the course pages of their website, and to populate the Unistats website. Institutions are able to update their Unistats data to add new courses, reflect changes in provision and correct data error during the year. The most recent version of the Unistats data is available to download from the HESA website (<http://www.hesa.ac.uk/unistatsdata>). Initial publication of the dataset is in September 2013 and updates will thereafter be made on a weekly basis.

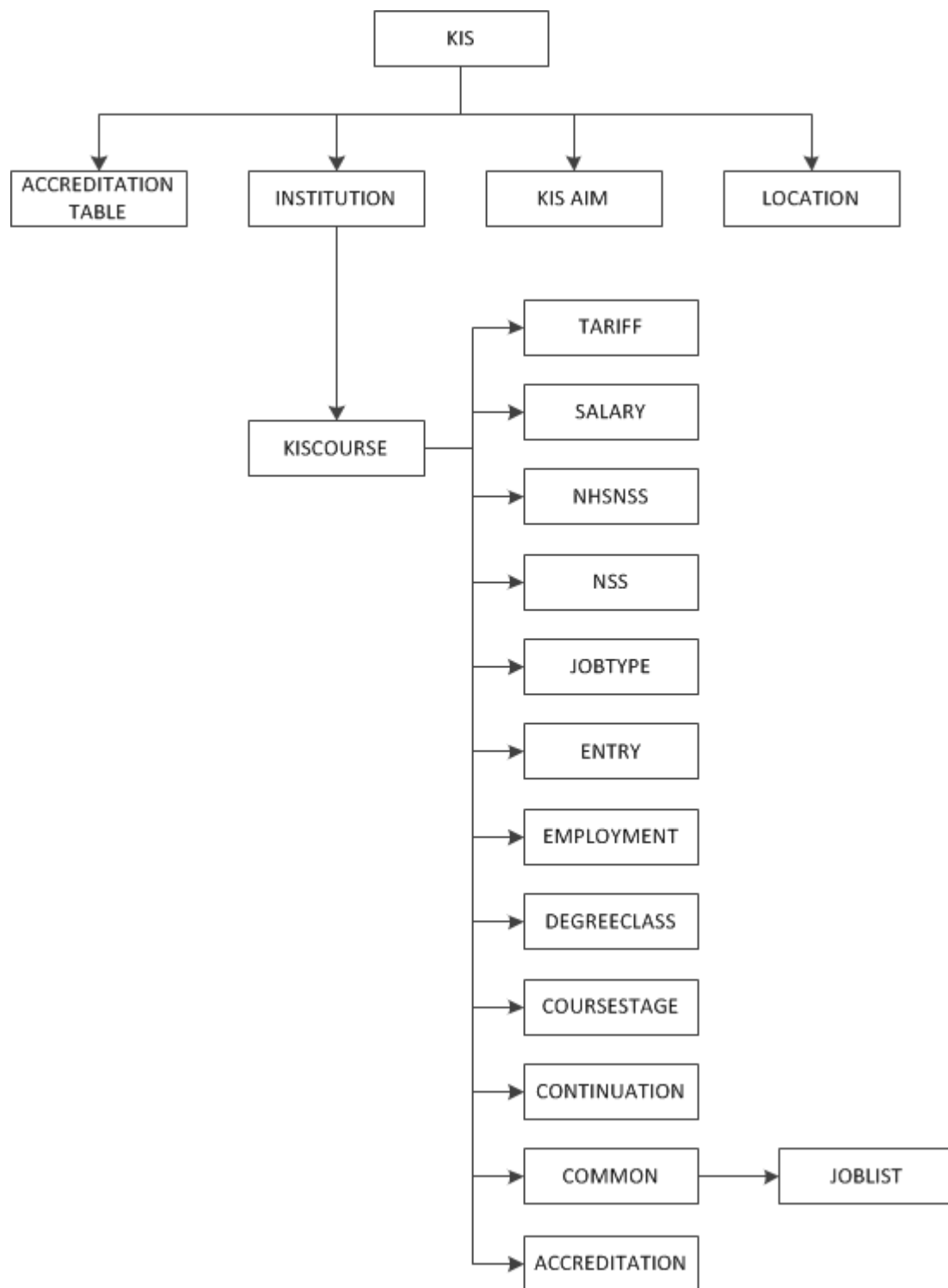
This document is provided to aid users' understanding of the fields contained within the Unistats dataset. The majority of the document consists of a series of tables explaining the definition of each field (or group of fields). When a field has been collected directly from the institution as part of the KIS collection, a link to its definition on the HESA website is provided. The annexes contain further information about how data are aggregated and rounded to prevent the potential identification of individuals, and how some fields are calculated.

The downloadable data contains a complete copy of the Unistats dataset. It is provided as a single XML file, along with a schema definition (xsd) file, describing the XML's structure. The diagram overleaf gives an overview of how the entities which comprise the Unistats data are related.

The UNISTATS file is provided singly to institutions and at sector level following the initial publication of the dataset in the autumn. The file contains data items which are supplied by the institution as part of the KIS submission and a number of additional fields which are either derived or provided from other records such as the HESA Student and DLHE records, the ILR and the NSS.

The tables below contain details of the fields that are not provided directly by the institution as part of the KIS submission.

## Unistats structure 2013/14



## Institution

|                    |  |
|--------------------|--|
| <b>Entity name</b> | <b>Institution</b>   |
| Description        | This entity contains fields relating to the reporting institution  |
| Min/max occurs     | 1/unbounded  |
| Parent entity      | KIS  |
| Notes              | Further information and technical guidance on the fields submitted by the institution as part of this entity can be found at <a href="http://www.hesa.ac.uk/C13061/A/Institution.html">http://www.hesa.ac.uk/C13061/A/Institution.html</a> . |

The Institution entity contains the following additional fields which are derived from the submitted data or provided from other records:

|                   |  |
|-------------------|--|
| <b>Field name</b> | <b>Institution.PUBUKPRN</b>  |
| Description       | Publishing UKPRN   |
| Field type        | Numeric  |
| Min/Max occurs    | 1/1  |
| Field length      | 8  |
| Parent entity     | Institution  |
| Notes             | This is the instituion where the course is primarily taught. If the course is taught at multiple institutions, PUBUKPRN is set to the reporting institution. Therefore PUBUKPRN will always be unique. |

|                   |  |
|-------------------|--|
| <b>Field name</b> | <b>Institution.Q24</b>   |
| Description       | NSS question   |
| Field type        | Numeric  |
| Min/Max occurs    | 0/1  |
| Field length      | 3  |
| Parent entity     | Institution  |
| Derived from      | The NSS survey   |
| Notes             | Proportion of students who "agree" or "strongly agree" with question 24 on the NSS (Q 28 on the NHSNSS): "I am satisfied with the Students' Union at my institution". (Question 23 is not included in Unistats; this was for free text responses.) |

|                   |  |
|-------------------|--|
| <b>Field name</b> | <b>Institution.Q24POP</b>  |
| Description       | Population of students who responded to the NSS  |
| Field type        | Numeric  |
| Min/Max occurs    | 0/1  |
| Field length      | 5  |
| Parent entity     | Institution  |
| Derived from      | The NSS survey   |
| Notes             | The number of students who responded to the NSS in 2013 and therefore could contribute to Q24. |

|                   |  |
|-------------------|--|
| <b>Field name</b> | <b>Institution.COUNTRY</b>   |
| Description       | Country of institution   |
| Field type        | Numeric  |
| Min/Max occurs    | 1/1  |
| Field length      | 2  |
| Parent entity     | Institution  |
| Derived from      | UKPRN  |
| Notes             | This field records the country in which the main institution is located and is used for the purposes of validation |

## KIS course

|                    |  |
|--------------------|--|
| <b>Entity name</b> | <b>KISCourse</b>   |
| Description        | This entity contains elements relating to the KIS course   |
| Min/max occurs     | 1/unbounded  |
| Parent entity      | KISCourse  |
| Notes              | Further information and technical guidance on the fields submitted by the institution as part of this entity can be found at <a href="http://www.hesa.ac.uk/C13061/A/KISCourse.html">http://www.hesa.ac.uk/C13061/A/KISCourse.html</a> . |

The KISCourse entity contains the following additional fields which are derived from the submitted data:

|                       |   |
|-----------------------|---|
| <b>Field name</b>     | <b>KISCourse.AVGCOURSEWORK</b>  |
| <b>Description</b>    | Average of the course assessed by coursework  |
| <b>Field type</b>     | Numeric   |
| <b>Min/Max occurs</b> | 0/1   |
| <b>Field length</b>   | 3   |
| <b>Parent entity</b>  | KISCourse   |
| <b>Derived from</b>   | The KIS data file submitted by the institution  |
| <b>Notes</b>          | This is the average of the COURSEWORK element taken over all COURSESTAGEs which contain an element of assessment. |

|                       |   |
|-----------------------|---|
| <b>Field name</b>     | <b>KISCourse.AVGSCHEДУED</b>  |
| <b>Description</b>    | Average of course spent in scheduled learning and teaching activities     |
| <b>Field type</b>     | Numeric   |
| <b>Min/Max occurs</b> | 0/1   |
| <b>Field length</b>   | 3   |
| <b>Parent entity</b>  | KISCourse   |
| <b>Derived from</b>   | The KIS data file submitted by the institution                            |
| <b>Notes</b>          | This is the average of the SCHEDULED element taken over all COURSESTAGEs. |

|                       |  |
|-----------------------|--|
| <b>Field name</b>     | <b>KISCourse.AVGWRITTEN</b>  |
| <b>Description</b>    | Average of course assessed by written exams  |
| <b>Field type</b>     | Numeric  |
| <b>Min/Max occurs</b> | 0/1  |
| <b>Field length</b>   | 3  |
| <b>Parent entity</b>  | KISCourse  |
| <b>Derived from</b>   | The KIS data file submitted by the institution   |
| <b>Notes</b>          | This is the average of the WRITTEN element taken over all COURSESTAGEs which contain an element of assessment. |

|                       |  |
|-----------------------|--|
| <b>Field name</b>     | <b>KISCourse.SBJ</b>   |
| <b>Description</b>    | JACS subject code  |
| <b>Field type</b>     | Alpha numeric  |
| <b>Min/Max occurs</b> | 0/unbounded  |
| <b>Field length</b>   | 3  |
| <b>Parent entity</b>  | KISCourse  |
| <b>Derived from</b>   | For new courses this will be derived from the KISCourse.JACS or KISCourse.LDCS field. For courses where a link to a HESA or ILR course has been made the subject code will be derived from the HESA or ILR course. |
| <b>Notes</b>          | The subject area within which the KIS sits. For most KISs this will be a code at level 3 in the JACS2.0 hierarchy. For a subject based KIS it will be a level 2 code.  |

## Entry qualifications

|                    |   |
|--------------------|---|
| <b>Entity name</b> | <b>Entry</b>  |
| Description        | This entity contains elements relating to the entry qualifications of students. |
| Min/max occurs     | 0/3   |
| Parent entity      | KISCourse   |

The Entry entity contains the following additional fields which are derived from HESA Student record and ILR:

|                   |  |
|-------------------|--|
| <b>Field name</b> | <b>Entry.ENTPOP</b>  |
| Description       | Population   |
| Field type        | Numeric  |
| Min/Max occurs    | 1/1  |
| Field length      | 5  |
| Parent entity     | Entry  |
| Derived from      | HESA Student record/ILR  |
| Notes             | This field displays the number of students in the population from which the tariff data is derived for the KIS course. A full description of how the populations are created, and the rounding methodology employed is in Annex A. |

|                   |  |
|-------------------|--|
| <b>Field name</b> | <b>Entry.ENTAGG</b>  |
| Description       | Aggregation level  |
| Field type        | Numeric  |
| Min/Max occurs    | 1/1  |
| Field length      | 2  |
| Parent entity     | Entry  |
| Derived from      | HESA Student record/ILR  |
| Notes             | This field displays the aggregation level applied to the tariff data for the KIS course. Details of the rounding and aggregation thresholds can be found in Annex A. |

|                   |   |
|-------------------|---|
| <b>Field name</b> | <b>Entry.ENTSBJ</b>   |
| Description       | JACS level subject code   |
| Field type        | Numeric   |
| Min/Max occurs    | 1/1   |
| Field length      | 3   |
| Parent entity     | Entry   |
| Derived from      | HESA Student record/ILR   |
| Notes             | This field displays the subject area for the KIS course. For most KIS courses this will be a code at level 3 in the JACS hierarchy. For a subject based KIS it will be a level 2 code. A full description of how this is derived is in Annex A. |

|                   |   |
|-------------------|---|
| <b>Field name</b> | <b>Entry.ACCESS</b>   |
| Description       | Access course   |
| Field type        | Numeric   |
| Min/Max occurs    | 1/1   |
| Field length      | 3   |
| Parent entity     | Entry   |
| Derived from      | HESA Student record/ILR   |
| Notes             | This field shows the proportion of students whose highest qualification on entry is an access course. A full description of this field is given in Annex E. |

|                       |  |
|-----------------------|--|
| <b>Field name</b>     | <b>Entry.ALEVEL</b>  |
| <b>Description</b>    | A-levels and Highers   |
| <b>Field type</b>     | Numeric  |
| <b>Min/Max occurs</b> | 1/1  |
| <b>Field length</b>   | 3  |
| <b>Parent entity</b>  | Entry  |
| <b>Derived from</b>   | HESA Student record/ILR  |
| <b>Notes</b>          | This field shows the proportion of students whose highest qualification on entry is A level or (Scottish) Highers. A full description of this field is given in Annex E. |

|                       |   |
|-----------------------|---|
| <b>Field name</b>     | <b>Entry.BACC</b>   |
| <b>Description</b>    | International baccalaureate   |
| <b>Field type</b>     | Numeric   |
| <b>Min/Max occurs</b> | 1/1   |
| <b>Field length</b>   | 3   |
| <b>Parent entity</b>  | Entry   |
| <b>Derived from</b>   | HESA Student record/ILR   |
| <b>Notes</b>          | This field shows the proportion of students whose highest qualification on entry is an International Baccalaureate. A full description of this field is given in Annex E. |

|                       |   |
|-----------------------|---|
| <b>Field name</b>     | <b>Entry.DEGREE</b>   |
| <b>Description</b>    | Degree or higher  |
| <b>Field type</b>     | Numeric   |
| <b>Min/Max occurs</b> | 1/1   |
| <b>Field length</b>   | 3   |
| <b>Parent entity</b>  | Entry   |
| <b>Derived from</b>   | HESA Student record/ILR   |
| <b>Notes</b>          | This field shows the proportion of students whose highest qualification on entry is a degree or higher qualification. A full description of this field is given in Annex E. |

|                       |  |
|-----------------------|--|
| <b>Field name</b>     | <b>Entry.FOUNDTN</b>   |
| <b>Description</b>    | Foundation course  |
| <b>Field type</b>     | Numeric  |
| <b>Min/Max occurs</b> | 1/1  |
| <b>Field length</b>   | 3  |
| <b>Parent entity</b>  | Entry  |
| <b>Derived from</b>   | HESA Student record/ILR  |
| <b>Notes</b>          | This field shows the proportion of students whose highest qualification on entry is a foundation course. A full description of this field is given in Annex E. |

|                       |  |
|-----------------------|--|
| <b>Field name</b>     | <b>Entry.NOQUALS</b>   |
| <b>Description</b>    | No qualifications  |
| <b>Field type</b>     | Numeric  |
| <b>Min/Max occurs</b> | 1/1  |
| <b>Field length</b>   | 3  |
| <b>Parent entity</b>  | Entry  |
| <b>Derived from</b>   | HESA Student record/ILR  |
| <b>Notes</b>          | This field shows the proportion of students with no qualifications on entry. A full description of this field is given in Annex E. |

|                       |   |
|-----------------------|---|
| <b>Field name</b>     | <b>Entry.OTHER</b>  |
| <b>Description</b>    | Other qualifications  |
| <b>Field type</b>     | Numeric   |
| <b>Min/Max occurs</b> | 1/1   |
| <b>Field length</b>   | 3   |
| <b>Parent entity</b>  | Entry   |
| <b>Derived from</b>   | HESA Student record/ILR   |
| <b>Notes</b>          | This field shows the proportion of students with other qualifications on entry. A full description of this field is given in Annex E. |

|                       |   |
|-----------------------|---|
| <b>Field name</b>     | <b>Entry.OTHERHE</b>  |
| <b>Description</b>    | Other HE Qualification  |
| <b>Field type</b>     | Numeric   |
| <b>Min/Max occurs</b> | 1/1   |
| <b>Field length</b>   | 3   |
| <b>Parent entity</b>  | Entry   |
| <b>Derived from</b>   | HESA Student record/ILR   |
| <b>Notes</b>          | This field shows the proportion of students whose highest qualification on entry is another HE qualification. A full description of this field is given in Annex E. |

## Tariff

|                    |  |
|--------------------|--|
| <b>Entity name</b> | <b>Tariff</b>  |
| Description        | This entity contains elements relating to the entry tariff points of students  |
| Min/max occurs     | 0/3  |
| Parent entity      | KISCourse  |
| Notes              | <p>The TARIFF entity shows the number of UCAS tariff points held by students who were previously enrolled on the KISCOURSE. These are not necessarily the minimum entry requirements for the course and you should check the university or college website for full information. The UCAS Tariff is the system for allocating points to qualifications used for entry to higher education. Universities and colleges can use the UCAS Tariff to make comparisons between applicants with different qualifications. Tariff points are often used in entry requirements, although other factors will often be taken into account by universities and colleges when deciding whether to offer places.</p> <p>For further information on the UCAS Tariff, see the UCAS website <a href="http://www.ucas.com/students/ucas_tariff/">http://www.ucas.com/students/ucas_tariff/</a></p> |

The Tariff entity contains the following additional fields which are derived from the HESA Student record and ILR:

|                       |  |
|-----------------------|--|
| <b>Field name</b>     | <b>Tariff.TARPOP</b>   |
| <b>Description</b>    | Population   |
| <b>Field type</b>     | Numeric  |
| <b>Min/Max occurs</b> | 1/1  |
| <b>Field length</b>   | 5  |
| <b>Parent entity</b>  | Tariff   |
| <b>Derived from</b>   | HESA Student record/ILR  |
| <b>Notes</b>          | This field displays the number of students in the population from which the tariff data is derived for the KIS course. A full description of how the populations are created, and the rounding methodology employed is in Annex A. |

|                       |  |
|-----------------------|--|
| <b>Field name</b>     | <b>Tariff.TARAGG</b>   |
| <b>Description</b>    | Aggregation level  |
| <b>Field type</b>     | Numeric  |
| <b>Min/Max occurs</b> | 1/1  |
| <b>Field length</b>   | 2  |
| <b>Parent entity</b>  | Tariff   |
| <b>Derived from</b>   | HESA Student record/ILR  |
| <b>Notes</b>          | This field displays the aggregation level applied to the tariff data for the KIS course. Details of the rounding and aggregation thresholds can be found in Annex A. |

|                       |   |
|-----------------------|---|
| <b>Field name</b>     | <b>Tariff.TARSBJ</b>  |
| <b>Description</b>    | JACS level subject code   |
| <b>Field type</b>     | Numeric   |
| <b>Min/Max occurs</b> | 1/1   |
| <b>Field length</b>   | 3   |
| <b>Parent entity</b>  | Tariff  |
| <b>Derived from</b>   | HESA Student record/ILR   |
| <b>Notes</b>          | This field displays the subject area for the KIS course. For most KIS courses this will be a code at level 3 in the JACS hierarchy. For a subject based KIS it will be a level 2 code. A full description of how this is derived is in Annex A. |

|                       |   |
|-----------------------|---|
| <b>Field name</b>     | <b>Tariff.T1</b>  |
| <b>Description</b>    | Less than 120 tariff points   |
| <b>Field type</b>     | Numeric   |
| <b>Min/Max occurs</b> | 1/1   |
| <b>Field length</b>   | 3   |
| <b>Parent entity</b>  | Tariff  |
| <b>Derived from</b>   | HESA Student record/ILR   |
| <b>Notes</b>          | This field shows the proportion of entrants with less than 120 tariff points. |

|                       |  |
|-----------------------|--|
| <b>Field name</b>     | <b>Tariff.TXXX (XXX is a number)</b>   |
| <b>Description</b>    | Between xxx and (xxx+39) tariff points   |
| <b>Field type</b>     | Numeric  |
| <b>Min/Max occurs</b> | 1/1  |
| <b>Field length</b>   | 3  |
| <b>Parent entity</b>  | Tariff   |
| <b>Derived from</b>   | HESA Student record/ILR  |
| <b>Notes</b>          | This field shows the proportion of entrants with between xxx and (xxx+39) tariff points. |

|                       |   |
|-----------------------|---|
| <b>Field name</b>     | <b>Tariff.T600</b>  |
| <b>Description</b>    | Over 600 tariff points  |
| <b>Field type</b>     | Numeric   |
| <b>Min/Max occurs</b> | 1/1   |
| <b>Field length</b>   | 3   |
| <b>Parent entity</b>  | Tariff  |
| <b>Derived from</b>   | HESA Student record/ILR   |
| <b>Notes</b>          | This field shows the proportion of entrants with 600 or more tariff points. |



## Continuation

| Entity name    | Continuation   |
|----------------|--|
| Description    | This entity contains elements relating to continuation information for students on the course.   |
| Min/max occurs | 0/3  |
| Parent entity  | KISCourse  |
| Notes          | The continuation data are derived by linking two successive years' of HESA student data. Records are linked using a unique identifier code on the student data (composed from HUSID+UKPRN+NUMHUS). The 2010/11 and 2011/12 student data have been linked when one year's worth of data are presented. This has been aggregated with the linked 2009/10 and 2010/11 student data when two years' data are shown. The continuation data are subject to rounding and aggregation as described in Annex A. |

The Continuation entity contains the following additional fields which are derived from HESA Student record and ILR:

| Field name     | Continuation.CONTPOP   |
|----------------|--|
| Description    | Population   |
| Field type     | Numeric  |
| Min/Max occurs | 1/1  |
| Field length   | 5  |
| Parent entity  | Continuation   |
| Derived from   | HESA Student record/ILR  |
| Notes          | This field displays the number of students in the population from which the continuation data is derived for the KIS course. A full description of how the populations are created, and the rounding methodology employed is in Annex A. |

| Field name     | Continuation.CONTAGG   |
|----------------|--|
| Description    | Aggregation level  |
| Field type     | Numeric  |
| Min/Max occurs | 1/1  |
| Field length   | 2  |
| Parent entity  | Continuation   |
| Derived from   | HESA Student record/ILR  |
| Notes          | This field displays the aggregation level applied to the continuation data for the KIS course. Details of the rounding and aggregation thresholds can be found in Annex A. |

| Field name     | Continuation.CONTSBJ   |
|----------------|--|
| Description    | JACS level subject code  |
| Field type     | Numeric  |
| Min/Max occurs | 1/1  |
| Field length   | 3  |
| Parent entity  | Continuation   |
| Derived from   | HESA Student record/ILR  |
| Notes          | This field displays the subject area for the KIS course. For most KISs this will be a code at level 3 in the JACS hierarchy. For a subject based KIS it will be a level 2 code. A full description of how this is derived is in Annex A. |

|                       |   |
|-----------------------|---|
| <b>Field name</b>     | <b>Continuation.UCONT</b>   |
| <b>Description</b>    | Continuing  |
| <b>Field type</b>     | Numeric   |
| <b>Min/Max occurs</b> | 1/1   |
| <b>Field length</b>   | 3   |
| <b>Parent entity</b>  | Continuation  |
| <b>Derived from</b>   | HESA Student record/ILR   |
| <b>Notes</b>          | This field shows the proportion of students who continued on their course at the institution in the year after starting the course. |

|                       |   |
|-----------------------|---|
| <b>Field name</b>     | <b>Continuation.UDORMANT</b>  |
| <b>Description</b>    | Dormant   |
| <b>Field type</b>     | Numeric   |
| <b>Min/Max occurs</b> | 1/1   |
| <b>Field length</b>   | 3   |
| <b>Parent entity</b>  | Continuation  |
| <b>Derived from</b>   | HESA Student record/ILR   |
| <b>Notes</b>          | This field shows the proportion of students recorded as dormant the year after they entered HE. This calculation includes those students who have been recorded as dormant or writing-up status in the second of the comparison years, or those who have suspended their studies and who have not obtained a qualification. |

|                       |  |
|-----------------------|--|
| <b>Field name</b>     | <b>Continuation.UGAINED</b>  |
| <b>Description</b>    | Gained intended or higher  |
| <b>Field type</b>     | Numeric  |
| <b>Min/Max occurs</b> | 1/1  |
| <b>Field length</b>   | 3  |
| <b>Parent entity</b>  | Continuation   |
| <b>Derived from</b>   | HESA Student record/ILR  |
| <b>Notes</b>          | This field shows the proportion of students who gained their intended award (or higher) the year after they entered HE. For those students who are not progressing into the following year of study, this is defined as those students who have achieved a qualification in either of the two comparison years AND that qualification is deemed to be equivalent to or higher than the qualification aimed for in the first of the two comparison years. |

|                       |  |
|-----------------------|--|
| <b>Field name</b>     | <b>Continuation.ULEFT</b>  |
| <b>Description</b>    | Left without award   |
| <b>Field type</b>     | Numeric  |
| <b>Min/Max occurs</b> | 1/1  |
| <b>Field length</b>   | 3  |
| <b>Parent entity</b>  | Continuation   |
| <b>Derived from</b>   | HESA Student record/ILR  |
| <b>Notes</b>          | This field shows the proportion of students who are not continuing into their following year of study, have not been awarded a qualification in either of the two comparison years and are not recorded with a dormant status. |

|                       |  |
|-----------------------|--|
| <b>Field name</b>     | <b>Continuation.ULOWER</b>   |
| <b>Description</b>    | Gained lower   |
| <b>Field type</b>     | Numeric  |
| <b>Min/Max occurs</b> | 1/1  |
| <b>Field length</b>   | 3  |
| <b>Parent entity</b>  | Continuation   |
| <b>Derived from</b>   | HESA Student record/ILR  |
| <b>Notes</b>          | This field shows the proportion of students who gained a lower award than the one originally intended the year after they entered HE. For those students who are not progressing into the following year of study, this is defined as those students who have achieved a qualification in either of the two comparison years AND that qualification is deemed to be lower than the qualification aimed for in the first of the two comparison years. |

## Degree Classification

|                    |  |
|--------------------|--|
| <b>Entity name</b> | <b>DegreeClass</b>   |
| Description        | This entity contains elements relating to the degree classifications obtained by students. |
| Min/max occurs     | 0/3  |
| Parent entity      | KISCourse  |
| Notes              | The degree classification data is provided from the HESA Student record and the ILR.       |

The DegreeClass entity contains the following additional fields which are provided from the HESA Student record and ILR:

|                       |   |
|-----------------------|---|
| <b>Field name</b>     | <b>DegreeClass.DEGPOP</b>   |
| <b>Description</b>    | Population  |
| <b>Field type</b>     | Numeric   |
| <b>Min/Max occurs</b> | 1/1   |
| <b>Field length</b>   | 5   |
| <b>Parent entity</b>  | DegreeClass   |
| <b>Derived from</b>   | HESA Student record/ILR   |
| <b>Notes</b>          | This field displays the number of students in the population from which the degree classification data is derived for the KIS course. A full description of how the populations are created, and the rounding methodology employed is in Annex A. |

|                       |   |
|-----------------------|---|
| <b>Field name</b>     | <b>DegreeClass.DEGAGG</b>   |
| <b>Description</b>    | Aggregation level   |
| <b>Field type</b>     | Numeric   |
| <b>Min/Max occurs</b> | 1/1   |
| <b>Field length</b>   | 2   |
| <b>Parent entity</b>  | DegreeClass   |
| <b>Derived from</b>   | HESA Student record/ILR   |
| <b>Notes</b>          | This field displays the aggregation level applied to the degree classification data for the KIS course. Details of the rounding and aggregation thresholds can be found in Annex A. |

|                       |  |
|-----------------------|--|
| <b>Field name</b>     | <b>DegreeClass.DEGSBJ</b>  |
| <b>Description</b>    | JACS level subject code  |
| <b>Field type</b>     | Numeric  |
| <b>Min/Max occurs</b> | 1/1  |
| <b>Field length</b>   | 3  |
| <b>Parent entity</b>  | DegreeClass  |
| <b>Derived from</b>   | HESA Student record/ILR  |
| <b>Notes</b>          | This field displays the subject area for the KIS course. For most KISs this will be a code at level 3 in the JACS hierarchy. For a subject based KIS it will be a level 2 code. A full description of how this is derived is in Annex A. |

|                       |   |
|-----------------------|---|
| <b>Field name</b>     | <b>DegreeClass.UFIRST</b>   |
| <b>Description</b>    | First class   |
| <b>Field type</b>     | Numeric   |
| <b>Min/Max occurs</b> | 1/1   |
| <b>Field length</b>   | 3   |
| <b>Parent entity</b>  | DegreeClass   |
| <b>Derived from</b>   | HESA Student record/ILR   |
| <b>Notes</b>          | This field shows the proportion of students gaining a first class degree (QualificationsAwarded.CLASS=01 in the HESA Student record.) |

|                       |   |
|-----------------------|---|
| <b>Field name</b>     | <b>DegreeClass.UUPPER</b>   |
| <b>Description</b>    | Upper second class (2:1)  |
| <b>Field type</b>     | Numeric   |
| <b>Min/Max occurs</b> | 1/1   |
| <b>Field length</b>   | 3   |
| <b>Parent entity</b>  | DegreeClass   |
| <b>Derived from</b>   | HESA Student record/ILR   |
| <b>Notes</b>          | This field shows the proportion of students gaining an upper second class (2:1) degree (QualificationsAwarded.CLASS=02 in the HESA Student record.) |

|                       |   |
|-----------------------|---|
| <b>Field name</b>     | <b>DegreeClass.ULOWER</b>   |
| <b>Description</b>    | Lower (or undivided) second class   |
| <b>Field type</b>     | Numeric   |
| <b>Min/Max occurs</b> | 1/1   |
| <b>Field length</b>   | 3   |
| <b>Parent entity</b>  | DegreeClass   |
| <b>Derived from</b>   | HESA Student record/ILR   |
| <b>Notes</b>          | This field shows the proportion of students gaining a lower (or undivided) second class (2:1) degree (QualificationsAwarded.CLASS=03, 04 in the HESA Student record.) |

|                       |  |
|-----------------------|--|
| <b>Field name</b>     | <b>DegreeClass.UOTHER</b>  |
| <b>Description</b>    | Other honours  |
| <b>Field type</b>     | Numeric  |
| <b>Min/Max occurs</b> | 1/1  |
| <b>Field length</b>   | 3  |
| <b>Parent entity</b>  | Degree class   |
| <b>Derived from</b>   | HESA Student record/ILR  |
| <b>Notes</b>          | This field shows the proportion of students gaining an other honours degree (QualificationsAwarded.CLASS=05, 06, 09 in the HESA Student record.) |

|                       |   |
|-----------------------|---|
| <b>Field name</b>     | <b>DegreeClass.UORDINARY</b>  |
| <b>Description</b>    | Ordinary  |
| <b>Field type</b>     | Numeric   |
| <b>Min/Max occurs</b> | 1/1   |
| <b>Field length</b>   | 3   |
| <b>Parent entity</b>  | DegreeClass   |
| <b>Derived from</b>   | HESA Student record/ILR   |
| <b>Notes</b>          | This field shows the proportion of students gaining an ordinary degree (QualificationsAwarded.CLASS=10 in the HESA Student record.) |

|                       |  |
|-----------------------|--|
| <b>Field name</b>     | <b>DegreeClass.UNA</b>   |
| <b>Description</b>    | Not classified   |
| <b>Field type</b>     | Numeric  |
| <b>Min/Max occurs</b> | 1/1  |
| <b>Field length</b>   | 3  |
| <b>Parent entity</b>  | DegreeClass  |
| <b>Derived from</b>   | HESA Student record/ILR  |
| <b>Notes</b>          | This field shows the proportion of students gaining a not classified degree (QualificationsAwarded.CLASS=07, 08, 11, 12, 13, 14 in the HESA Student record.) |

## Employment statistics

|                    |  |
|--------------------|--|
| <b>Entity name</b> | <b>Employment</b>  |
| Description        | This entity contains elements relating to the employment outcomes students.  |
| Min/max occurs     | 0/3  |
| Parent entity      | KISCourse  |
| Notes              | This entity contains fields relating to the employment outcome of students. The employment statistics included in the EMPLOYMENT entity of the Unistats data are taken from the Destination of Leavers in Higher Education Survey (DLHE), which surveys students six months after their course ends. It seeks to establish whether students are working (and if so what sort of work they are doing) and/or undertaking further study. |

The Employment entity contains the following additional fields which are provided from DLHE Survey:

|                       |  |
|-----------------------|--|
| <b>Field name</b>     | <b>Employment.EMPOP</b>  |
| <b>Description</b>    | Population   |
| <b>Field type</b>     | Numeric  |
| <b>Min/Max occurs</b> | 1/1  |
| <b>Field length</b>   | 5  |
| <b>Parent entity</b>  | Employment   |
| <b>Derived from</b>   | Destination of Leavers in Higher Education Survey (DLHE)   |
| <b>Notes</b>          | This field displays the number of students in the population from which the employment data is derived for the KIS course. A full description of how the populations are created, and the rounding methodology employed is in Annex A. |

|                       |  |
|-----------------------|--|
| <b>Field name</b>     | <b>Employment.EMPAGG</b>   |
| <b>Description</b>    | Aggregation level  |
| <b>Field type</b>     | Numeric  |
| <b>Min/Max occurs</b> | 1/1  |
| <b>Field length</b>   | 2  |
| <b>Parent entity</b>  | Employment   |
| <b>Derived from</b>   | Destination of Leavers in Higher Education Survey (DLHE)   |
| <b>Notes</b>          | This field displays the aggregation level applied to the employment data for the KIS course. Details of the rounding and aggregation thresholds can be found in Annex A. |

|                       |  |
|-----------------------|--|
| <b>Field name</b>     | <b>Employment.EMPSBJ</b>   |
| <b>Description</b>    | JACS level subject code  |
| <b>Field type</b>     | Numeric  |
| <b>Min/Max occurs</b> | 1/1  |
| <b>Field length</b>   | 3  |
| <b>Parent entity</b>  | Employment   |
| <b>Derived from</b>   | Destination of Leavers in Higher Education Survey (DLHE)   |
| <b>Notes</b>          | This field displays the subject area for the KIS course. For most KISs this will be a code at level 3 in the JACS hierarchy. For a subject based KIS it will be a level 2 code. A full description of how this is derived is in Annex A. |

|                       |  |
|-----------------------|--|
| <b>Field name</b>     | <b>Employment.WORKSTUDY</b>  |
| <b>Description</b>    | Proportion of students in work and/or study  |
| <b>Field type</b>     | Numeric  |
| <b>Min/Max occurs</b> | 1/1  |
| <b>Field length</b>   | 3  |
| <b>Parent entity</b>  | Employment   |
| <b>Derived from</b>   | Destination of Leavers in Higher Education Survey (DLHE)   |
| <b>Notes</b>          | This field shows the proportion of students who are recorded as BOTH, WORK or STUDY six months after their course ended. A full description of this field is given in Annex B. |

|                       |  |
|-----------------------|--|
| <b>Field name</b>     | <b>Employment.STUDY</b>  |
| <b>Description</b>    | Proportion of students studying only   |
| <b>Field type</b>     | Numeric  |
| <b>Min/Max occurs</b> | 1/1  |
| <b>Field length</b>   | 3  |
| <b>Parent entity</b>  | Employment   |
| <b>Derived from</b>   | Destination of Leavers in Higher Education Survey (DLHE)   |
| <b>Notes</b>          | This field shows the proportion of students who are undertaking further study six months after their course ended. A full description of this field is given in Annex B. |

|                       |   |
|-----------------------|---|
| <b>Field name</b>     | <b>Employment.ASSUNEMP</b>  |
| <b>Description</b>    | Proportion of students assumed unemployed   |
| <b>Field type</b>     | Numeric   |
| <b>Min/Max occurs</b> | 1/1   |
| <b>Field length</b>   | 3   |
| <b>Parent entity</b>  | Employment  |
| <b>Derived from</b>   | Destination of Leavers in Higher Education Survey (DLHE)  |
| <b>Notes</b>          | This field shows the proportion of students assumed to be unemployed six months after their course ended. A full description of this field is given in Annex B. |

|                       |  |
|-----------------------|--|
| <b>Field name</b>     | <b>Employment.BOTH</b>   |
| <b>Description</b>    | Proportion of students in work and study   |
| <b>Field type</b>     | Numeric  |
| <b>Min/Max occurs</b> | 1/1  |
| <b>Field length</b>   | 3  |
| <b>Parent entity</b>  | Employment   |
| <b>Derived from</b>   | Destination of Leavers in Higher Education Survey (DLHE)   |
| <b>Notes</b>          | This field shows the proportion of students in work and study six months after their course ended. A full description of this field is given in Annex B. |

|                       |   |
|-----------------------|---|
| <b>Field name</b>     | <b>Employment.NOAVAIL</b>   |
| <b>Description</b>    | Proportion of students not available for work or study  |
| <b>Field type</b>     | Numeric   |
| <b>Min/Max occurs</b> | 1/1   |
| <b>Field length</b>   | 3   |
| <b>Parent entity</b>  | Employment  |
| <b>Derived from</b>   | Destination of Leavers in Higher Education Survey (DLHE)  |
| <b>Notes</b>          | This field shows the proportion of students who are not available for work or study six months after their course ended. A full description of this field is given in Annex B |

|                       |  |
|-----------------------|--|
| <b>Field name</b>     | <b>Employment.WORK</b>   |
| <b>Description</b>    | Proportion of students working only  |
| <b>Field type</b>     | Numeric  |
| <b>Min/Max occurs</b> | 1/1  |
| <b>Field length</b>   | 3  |
| <b>Parent entity</b>  | Employment   |
| <b>Derived from</b>   | Destination of Leavers in Higher Education Survey (DLHE)   |
| <b>Notes</b>          | This field shows the proportion of students in work six months after their course ended. A full description of this field is given in Annex B. |

## Common job types

|                       |   |
|-----------------------|---|
| <b>Entity name</b>    | <b>Common</b>   |
| <b>Description</b>    | This entity contains elements relating to common job types obtained by students taking the course.  |
| <b>Min/max occurs</b> | 0/3   |
| <b>Parent entity</b>  | KISCourse   |
| <b>Notes</b>          | The data included in the Common entity of the Unistats data are taken from the Destination of Leavers in Higher Education Survey (DLHE), which surveys students six months after their course ends. It seeks to establish whether students are working (and if so what sort of work they are doing) and/or undertaking further study. |

The Common entity contains the following additional fields which are provided from DLHE Survey:

|                       |  |
|-----------------------|--|
| <b>Field name</b>     | <b>Common.COMPOP</b>                                     |
| <b>Description</b>    | Population   |
| <b>Field type</b>     | Numeric  |
| <b>Min/Max occurs</b> | 1/1  |
| <b>Field length</b>   | 5  |
| <b>Parent entity</b>  | Common   |
| <b>Derived from</b>   | Destination of Leavers in Higher Education Survey (DLHE) |

|              |   |
|--------------|---|
| <b>Notes</b> | This field displays the number of students in the population from which the common job types data is derived for the KIS course. A full description of how the populations are created, and the rounding methodology employed is in Annex A. Due to the changes to the SOC coding frame between 2010/11 and 2011/12, it is not appropriate to aggregate two years of SOC data, therefore common job types only includes aggregations of 2011/12 data. |
|--------------|---|

|                       |   |
|-----------------------|---|
| <b>Field name</b>     | <b>Common.COMAGG</b>  |
| <b>Description</b>    | Aggregation level   |
| <b>Field type</b>     | Numeric   |
| <b>Min/Max occurs</b> | 1/1   |
| <b>Field length</b>   | 2   |
| <b>Parent entity</b>  | Common  |
| <b>Derived from</b>   | Destination of Leavers in Higher Education Survey (DLHE)  |
| <b>Notes</b>          | This field displays the aggregation level applied to the common job types data for the KIS course. Details of the rounding and aggregation thresholds can be found in Annex A. Due to the changes to the SOC coding frame between 2010/11 and 2011/12, it is not appropriate to aggregate two years of SOC data, therefore common job types only includes aggregations of 2011/12 data. |

|                       |  |
|-----------------------|--|
| <b>Field name</b>     | <b>Common.COMSBJ</b>   |
| <b>Description</b>    | JACS level subject code  |
| <b>Field type</b>     | Numeric  |
| <b>Min/Max occurs</b> | 1/1  |
| <b>Field length</b>   | 3  |
| <b>Parent entity</b>  | Common   |
| <b>Derived from</b>   | Destination of Leavers in Higher Education Survey (DLHE)   |
| <b>Notes</b>          | This field displays the subject area for the KIS course. For most KISs this will be a code at level 3 in the JACS hierarchy. For a subject based KIS it will be a level 2 code. A full description of how this is derived is in Annex A. |

## Job list

|                    |  |
|--------------------|--|
| <b>Entity name</b> | <b>JobList</b>   |
| Description        | This entity contains information about a common job type obtained by students.   |
| Min/max occurs     | 1/10   |
| Parent entity      | KISCourse  |
| Notes              | Those students who reported their employment circumstances as working on the DLHE survey were also required to report their job title. This was then used to derive an occupation type category within the Standard Occupational Classification (SOC). |

The JobList entity contains the following additional fields which are provided from DLHE Survey:

|                       |  |
|-----------------------|--|
| <b>Field name</b>     | <b>Joblist.JOB</b>   |
| <b>Description</b>    | The type of employment   |
| <b>Field type</b>     | String   |
| <b>Min/Max occurs</b> | 1/1  |
| <b>Field length</b>   | 80   |
| <b>Parent entity</b>  | Joblist  |
| <b>Derived from</b>   | Destination of Leavers in Higher Education Survey (DLHE)   |
| <b>Notes</b>          | Jobs are classified into one of 36 groups, based on their SOC code. A list of the job types is given in Annex D. |



|                       |  |
|-----------------------|--|
| <b>Field name</b>     | <b>Joblist.PERC</b>  |
| <b>Description</b>    | The percentage of students in the type of employment   |
| <b>Field type</b>     | Numeric  |
| <b>Min/Max occurs</b> | 1/1  |
| <b>Field length</b>   | 3  |
| <b>Parent entity</b>  | Joblist  |
| <b>Derived from</b>   | Destination of Leavers in Higher Education Survey (DLHE)   |
| <b>Notes</b>          | This field displays the aggregation level applied to the common job types data for the KIS course. Details of the rounding and aggregation thresholds can be found in Annex A. |

|                       |   |
|-----------------------|---|
| <b>Field name</b>     | <b>Joblist.ORDER</b>  |
| <b>Description</b>    | The order to display the jobs in  |
| <b>Field type</b>     | Numeric   |
| <b>Min/Max occurs</b> | 1/1   |
| <b>Field length</b>   | 5   |
| <b>Parent entity</b>  | Joblist   |
| <b>Derived from</b>   | Destination of Leavers in Higher Education Survey (DLHE)  |
| <b>Notes</b>          | The order to display the jobs on the Unistats website. This provides a fixed ordering according to percentage of students in each job even where the rounded percentages are equal. (Ordered by the highest %age then SOC ascending, where SOC is treated as a character, so 10 is ordered above 9) |

## Job type

|                    |  |
|--------------------|--|
| <b>Entity name</b> | <b>JobType</b>   |
| Description        | This entity contains elements relating to the types of profession entered by students.   |
| Min/max occurs     | 0/3  |
| Parent entity      | KISCourse  |
| Notes              | Those students who reported their employment circumstances as working on the DLHE survey were also required to report their job title. This was then used to derive an occupation type category within the Standard Occupational Classification (SOC). |

The JobType entity contains the following additional fields which are provided from DLHE Survey:

|                       |   |
|-----------------------|---|
| <b>Field name</b>     | <b>JobType.JOBPOP</b>   |
| <b>Description</b>    | Population  |
| <b>Field type</b>     | Numeric   |
| <b>Min/Max occurs</b> | 1/1   |
| <b>Field length</b>   | 5   |
| <b>Parent entity</b>  | JobType   |
| <b>Derived from</b>   | Destination of Leavers in Higher Education Survey (DLHE)  |
| <b>Notes</b>          | This field displays the number of students in the population from which the job type data is derived for the KIS course. A full description of how the populations are created, and the rounding methodology employed is in Annex A. Due to the changes to the SOC coding frame between 2010/11 and 2011/12, it is not appropriate to aggregate two years of SOC data, therefore job type only includes aggregations of 2011/12 data. |

|                       |   |
|-----------------------|---|
| <b>Field name</b>     | <b>JobType.JOBAGG</b>   |
| <b>Description</b>    | Aggregation level   |
| <b>Field type</b>     | Numeric   |
| <b>Min/Max occurs</b> | 1/1   |
| <b>Field length</b>   | 2   |
| <b>Parent entity</b>  | JobType   |
| <b>Derived from</b>   | Destination of Leavers in Higher Education Survey (DLHE)  |
| <b>Notes</b>          | This field displays the aggregation level applied to the job type data for the KIS course. Details of the rounding and aggregation thresholds can be found in Annex A. Due to the changes to the SOC coding frame between 2010/11 and 2011/12, it is not appropriate to aggregate two years of SOC data, therefore job type only includes aggregations of 2011/12 data. |

|                       |  |
|-----------------------|--|
| <b>Field name</b>     | <b>JobType.JOBSBJ</b>  |
| <b>Description</b>    | JACS level subject code  |
| <b>Field type</b>     | Numeric  |
| <b>Min/Max occurs</b> | 1/1  |
| <b>Field length</b>   | 3  |
| <b>Parent entity</b>  | JobType  |
| <b>Derived from</b>   | Destination of Leavers in Higher Education Survey (DLHE)   |
| <b>Notes</b>          | This field displays the subject area for the KIS course. For most KISs this will be a code at level 3 in the JACS hierarchy. For a subject based KIS it will be a level 2 code. A full description of how this is derived is in Annex A. |

|                       |  |
|-----------------------|--|
| <b>Field name</b>     | <b>JobType.PROFMAN</b>   |
| <b>Description</b>    | Professional or managerial jobs  |
| <b>Field type</b>     | Numeric  |
| <b>Min/Max occurs</b> | 1/1  |
| <b>Field length</b>   | 3  |
| <b>Parent entity</b>  | JobType  |
| <b>Derived from</b>   | Destination of Leavers in Higher Education Survey (DLHE)   |
| <b>Notes</b>          | This field is derived from the SOC2010 (DLHE) codes ( <a href="http://www.hesa.ac.uk/content/view/102/143/1/9/">http://www.hesa.ac.uk/content/view/102/143/1/9/</a> ). It gives the proportion of students in professional or managerial jobs. These are defined as those students whose occupation code starts with 1, 2 or 3. See Annex D for further information on the SOC coding. |

|                       |   |
|-----------------------|---|
| <b>Field name</b>     | <b>JobType.OTHERJOB</b>   |
| <b>Description</b>    | Non professional or managerial jobs   |
| <b>Field type</b>     | Numeric   |
| <b>Min/Max occurs</b> | 1/1   |
| <b>Field length</b>   | 3   |
| <b>Parent entity</b>  | JobType   |
| <b>Derived from</b>   | Destination of Leavers in Higher Education Survey (DLHE)  |
| <b>Notes</b>          | This field is derived from the SOC2010 (DLHE) codes ( <a href="http://www.hesa.ac.uk/content/view/102/143/1/9/">http://www.hesa.ac.uk/content/view/102/143/1/9/</a> ). It gives the proportion of students in non professional or managerial jobs. . These are defined as those students whose SOC2010 starts with 4,5,6,7,8 or 9. See Annex D for further information on the SOC coding. |

|                       |   |
|-----------------------|---|
| <b>Field name</b>     | <b>JobType.UNKWN</b>  |
| <b>Description</b>    | Unable to classify/unknown  |
| <b>Field type</b>     | Numeric   |
| <b>Min/Max occurs</b> | 1/1   |
| <b>Field length</b>   | 3   |
| <b>Parent entity</b>  | JobType   |
| <b>Derived from</b>   | Destination of Leavers in Higher Education Survey (DLHE)  |
| <b>Notes</b>          | This field is derived from the SOC2010 (DLHE) codes ( <a href="http://www.hesa.ac.uk/content/view/102/143/1/9/">http://www.hesa.ac.uk/content/view/102/143/1/9/</a> ). It gives the proportion of students whose job classification cannot be derived, or whose SOC code is unknown. These are defined as those students whose SOC2010 is 0 or Null. See Annex D for further information on the SOC coding. |

## Salary

|                    |   |
|--------------------|---|
| <b>Entity name</b> | <b>Salary</b>   |
| Description        | This entity contains elements relating to the salary information of students.   |
| Min/max occurs     | 0/3   |
| Parent entity      | KISCourse   |
| Notes              | Those students who reported their employment circumstances as working on the DLHE and/or Longitudinal DLHE survey were also asked to report their salary. |

The Salary entity contains the following additional fields which are provided from DLHE Survey:

|                       |  |
|-----------------------|--|
| <b>Field name</b>     | <b>Salary.SALPOP</b>   |
| <b>Description</b>    | Population   |
| <b>Field type</b>     | Numeric  |
| <b>Min/Max occurs</b> | 1/1  |
| <b>Field length</b>   | 5  |
| <b>Parent entity</b>  | Salary   |
| <b>Derived from</b>   | Destination of Leavers in Higher Education Survey (DLHE)   |
| <b>Notes</b>          | This field displays the number of students in the population from which the salary data is derived for the KIS course. A full description of how the populations are created, and the rounding methodology employed is in Annex A. |

|                       |  |
|-----------------------|--|
| <b>Field name</b>     | <b>Salary.SALAGG</b>   |
| <b>Description</b>    | Aggregation level  |
| <b>Field type</b>     | Numeric  |
| <b>Min/Max occurs</b> | 1/1  |
| <b>Field length</b>   | 2  |
| <b>Parent entity</b>  | Salary   |
| <b>Derived from</b>   | Destination of Leavers in Higher Education Survey (DLHE)   |
| <b>Notes</b>          | This field displays the aggregation level applied to the salary data for the KIS course. Details of the rounding and aggregation thresholds can be found in Annex A. |

|                       |  |
|-----------------------|--|
| <b>Field name</b>     | <b>Salary.SALSBJ</b>   |
| <b>Description</b>    | JACS level subject code  |
| <b>Field type</b>     | Numeric  |
| <b>Min/Max occurs</b> | 1/1  |
| <b>Field length</b>   | 3  |
| <b>Parent entity</b>  | Salary   |
| <b>Derived from</b>   | Destination of Leavers in Higher Education Survey (DLHE)   |
| <b>Notes</b>          | This field displays the subject area for the KIS course. For most KISs this will be a code at level 3 in the JACS hierarchy. For a subject based KIS it will be a level 2 code. A full description of how this is derived is in Annex A. |

|                       |  |
|-----------------------|--|
| <b>Field name</b>     | <b>Salary.LDLQ</b>   |
| <b>Description</b>    | Sector lower quartile salary for subject (40 months)   |
| <b>Field type</b>     | Numeric  |
| <b>Min/Max occurs</b> | 0/1  |
| <b>Field length</b>   | 6  |
| <b>Parent entity</b>  | Employment   |
| <b>Derived from</b>   | Longitudinal Destination of Leavers in Higher Education Survey (LDLHE)   |
| <b>Notes</b>          | This field contains the lower quartile salary of students at all institutions of the subject 40 months after graduation. The derivation of this field is described in Annex C. |

|                       |  |
|-----------------------|--|
| <b>Field name</b>     | <b>Salary.LDMED</b>  |
| <b>Description</b>    | Sector median salary for subject (40 months)   |
| <b>Field type</b>     | Numeric  |
| <b>Min/Max occurs</b> | 0/1  |
| <b>Field length</b>   | 6  |
| <b>Parent entity</b>  | Employment   |
| <b>Derived from</b>   | Longitudinal Destination of Leavers in Higher Education Survey (LDLHE)   |
| <b>Notes</b>          | This field contains the median salary of students at all institutions of the subject 40 months after graduation. The derivation of this field is described in Annex C. |

|                       |  |
|-----------------------|--|
| <b>Field name</b>     | <b>Salary.LDUQ</b>   |
| <b>Description</b>    | Sector upper quartile salary for subject (40 months)   |
| <b>Field type</b>     | Numeric  |
| <b>Min/Max occurs</b> | 0/1  |
| <b>Field length</b>   | 6  |
| <b>Parent entity</b>  | Employment   |
| <b>Derived from</b>   | Longitudinal Destination of Leavers in Higher Education Survey (LDLHE)   |
| <b>Notes</b>          | This field contains the upper quartile salary of students at all institutions of the subject 40 months after graduation. The derivation of this field is described in Annex C. |

|                       |   |
|-----------------------|---|
| <b>Field name</b>     | <b>Salary.LQ</b>  |
| <b>Description</b>    | Sector lower quartile salary for subject (6 months)   |
| <b>Field type</b>     | Numeric   |
| <b>Min/Max occurs</b> | 0/1   |
| <b>Field length</b>   | 6   |
| <b>Parent entity</b>  | Salary  |
| <b>Derived from</b>   | Destination of Leavers in Higher Education Survey (DLHE)  |
| <b>Notes</b>          | This field contains the lower quartile salary of students at all institutions of the subject 6 months after graduation. The derivation of this field is described in Annex C. |

|                       |   |
|-----------------------|---|
| <b>Field name</b>     | <b>Salary.MED</b>   |
| <b>Description</b>    | Sector median quartile salary for subject (6 months)  |
| <b>Field type</b>     | Numeric   |
| <b>Min/Max occurs</b> | 0/1   |
| <b>Field length</b>   | 6   |
| <b>Parent entity</b>  | Salary  |
| <b>Derived from</b>   | Destination of Leavers in Higher Education Survey (DLHE)  |
| <b>Notes</b>          | This field contains the median salary of students at all institutions of the subject 6 months after graduation. The derivation of this field is described in Annex C. |

|                       |   |
|-----------------------|---|
| <b>Field name</b>     | <b>Salary.UQ</b>  |
| <b>Description</b>    | Sector upper quartile salary for subject (6 months)   |
| <b>Field type</b>     | Numeric   |
| <b>Min/Max occurs</b> | 0/1   |
| <b>Field length</b>   | 6   |
| <b>Parent entity</b>  | Salary  |
| <b>Derived from</b>   | Destination of Leavers in Higher Education Survey (DLHE)  |
| <b>Notes</b>          | This field contains the upper quartile salary of students at all institutions of the subject 6 months after graduation. The derivation of this field is described in Annex C. |

|                       |  |
|-----------------------|--|
| <b>Field name</b>     | <b>Salary.INSTLQ</b>   |
| <b>Description</b>    | Course lower quartile salary (6 months)  |
| <b>Field type</b>     | Numeric  |
| <b>Min/Max occurs</b> | 0/1  |
| <b>Field length</b>   | 6  |
| <b>Parent entity</b>  | Salary   |
| <b>Derived from</b>   | Destination of Leavers in Higher Education Survey (DLHE)   |
| <b>Notes</b>          | This field contains the lower quartile salary of students on the course 6 months after graduation. The derivation of this field is described in Annex C. |

|                       |  |
|-----------------------|--|
| <b>Field name</b>     | <b>Salary.INSTMED</b>  |
| <b>Description</b>    | Course median quartile salary for subject (6 months)   |
| <b>Field type</b>     | Numeric  |
| <b>Min/Max occurs</b> | 0/1  |
| <b>Field length</b>   | 6  |
| <b>Parent entity</b>  | Salary   |
| <b>Derived from</b>   | Destination of Leavers in Higher Education Survey (DLHE)   |
| <b>Notes</b>          | This field contains the median salary of students on the course 6 months after graduation. The derivation of this field is described in Annex C. |

|                       |  |
|-----------------------|--|
| <b>Field name</b>     | <b>Salary.INSTUQ</b>   |
| <b>Description</b>    | Course upper quartile salary for subject (6 months)  |
| <b>Field type</b>     | Numeric  |
| <b>Min/Max occurs</b> | 0/1  |
| <b>Field length</b>   | 6  |
| <b>Parent entity</b>  | Salary   |
| <b>Derived from</b>   | Destination of Leavers in Higher Education Survey (DLHE)   |
| <b>Notes</b>          | This field contains the upper quartile salary of students on the course 6 months after graduation. The derivation of this field is described in Annex C. |

## NSS

|                    |   |
|--------------------|---|
| <b>Entity name</b> | <b>NSS</b>  |
| Description        | This entity contains the National Student Survey (NSS) results. |
| Min/max occurs     | 0/3   |
| Parent entity      | KISCourse   |

The NSS entity contains the following additional fields which are provided from NSS:

|                       |   |
|-----------------------|---|
| <b>Field name</b>     | <b>NSS.NSSPOP</b>   |
| <b>Description</b>    | Population  |
| <b>Field type</b>     | Numeric   |
| <b>Min/Max occurs</b> | 1/1   |
| <b>Field length</b>   | 5   |
| <b>Parent entity</b>  | NSS   |
| <b>Derived from</b>   | National Student Survey (NSS)   |
| <b>Notes</b>          | This field displays the number of students in the population from which the NSS data is derived for the KIS course. A full description of how the populations are created, and the rounding methodology employed is in Annex A. |

|                       |   |
|-----------------------|---|
| <b>Field name</b>     | <b>NSS.NSSAGG</b>   |
| <b>Description</b>    | Aggregation level   |
| <b>Field type</b>     | Numeric   |
| <b>Min/Max occurs</b> | 1/1   |
| <b>Field length</b>   | 2   |
| <b>Parent entity</b>  | NSS   |
| <b>Derived from</b>   | National Student Survey (NSS)   |
| <b>Notes</b>          | This field displays the aggregation level applied to the NSS data for the KIS course. Details of the rounding and aggregation thresholds can be found in Annex A. |

|                       |  |
|-----------------------|--|
| <b>Field name</b>     | <b>NSS.NSSBJ</b>   |
| <b>Description</b>    | JACS level subject code  |
| <b>Field type</b>     | Numeric  |
| <b>Min/Max occurs</b> | 1/1  |
| <b>Field length</b>   | 3  |
| <b>Parent entity</b>  | NSS  |
| <b>Derived from</b>   | National Student Survey (NSS)  |
| <b>Notes</b>          | This field displays the subject area for the KIS course. For most KISs this will be a code at level 3 in the JACS hierarchy. For a subject based KIS it will be a level 2 code. A full description of how this is derived is in Annex A. |

|                       |  |
|-----------------------|--|
| <b>Field name</b>     | <b>NSS.Q1</b>  |
| <b>Description</b>    | NSS question   |
| <b>Field type</b>     | Numeric  |
| <b>Min/Max occurs</b> | 1/1  |
| <b>Field length</b>   | 3  |
| <b>Parent entity</b>  | NSS  |
| <b>Derived from</b>   | National Student Survey (NSS)  |
| <b>Notes</b>          | This field shows the proportion of students who "agree" or "strongly agree" with question 1 on the NSS: "Staff are good at explaining things". |

|                       |  |
|-----------------------|--|
| <b>Field name</b>     | <b>NSS.Q2</b>  |
| <b>Description</b>    | NSS question   |
| <b>Field type</b>     | Numeric  |
| <b>Min/Max occurs</b> | 1/1  |
| <b>Field length</b>   | 3  |
| <b>Parent entity</b>  | NSS  |
| <b>Derived from</b>   | National Student Survey (NSS)  |
| <b>Notes</b>          | This field shows the proportion of students who "agree" or "strongly agree" with question 2 on the NSS: "Staff have made the subject interesting". |

|                       |  |
|-----------------------|--|
| <b>Field name</b>     | <b>NSS.Q3</b>  |
| <b>Description</b>    | NSS question   |
| <b>Field type</b>     | Numeric  |
| <b>Min/Max occurs</b> | 1/1  |
| <b>Field length</b>   | 3  |
| <b>Parent entity</b>  | NSS  |
| <b>Derived from</b>   | National Student Survey (NSS)  |
| <b>Notes</b>          | This field shows the proportion of students who "agree" or "strongly agree" with question 3 on the NSS: "Staff are enthusiastic about what they are teaching". |

|                       |   |
|-----------------------|---|
| <b>Field name</b>     | <b>NSS.Q4</b>   |
| <b>Description</b>    | NSS question  |
| <b>Field type</b>     | Numeric   |
| <b>Min/Max occurs</b> | 1/1   |
| <b>Field length</b>   | 3   |
| <b>Parent entity</b>  | NSS   |
| <b>Derived from</b>   | National Student Survey (NSS)   |
| <b>Notes</b>          | This field shows the proportion of students who "agree" or "strongly agree" with question 4 on the NSS: "The course is intellectually stimulating". |

|                       |  |
|-----------------------|--|
| <b>Field name</b>     | <b>NSS.Q5</b>  |
| <b>Description</b>    | NSS question   |
| <b>Field type</b>     | Numeric  |
| <b>Min/Max occurs</b> | 1/1  |
| <b>Field length</b>   | 3  |
| <b>Parent entity</b>  | NSS  |
| <b>Derived from</b>   | National Student Survey (NSS)  |
| <b>Notes</b>          | This field shows the proportion of students who "agree" or "strongly agree" with question 5 on the NSS: "The criteria used in marking have been clear in advance". |

|                       |   |
|-----------------------|---|
| <b>Field name</b>     | <b>NSS.Q6</b>   |
| <b>Description</b>    | NSS question  |
| <b>Field type</b>     | Numeric   |
| <b>Min/Max occurs</b> | 1/1   |
| <b>Field length</b>   | 3   |
| <b>Parent entity</b>  | NSS   |
| <b>Derived from</b>   | National Student Survey (NSS)   |
| <b>Notes</b>          | This field shows the proportion of students who "agree" or "strongly agree" with question 6 on the NSS: "Assessment arrangements and marking have been fair". |

|                       |  |
|-----------------------|--|
| <b>Field name</b>     | <b>NSS.Q7</b>  |
| <b>Description</b>    | NSS question   |
| <b>Field type</b>     | Numeric  |
| <b>Min/Max occurs</b> | 1/1  |
| <b>Field length</b>   | 3  |
| <b>Parent entity</b>  | NSS  |
| <b>Derived from</b>   | National Student Survey (NSS)  |
| <b>Notes</b>          | This field shows the proportion of students who "agree" or "strongly agree" with question 7 on the NSS: "Feedback on my work has been prompt". |

|                       |   |
|-----------------------|---|
| <b>Field name</b>     | <b>NSS.Q8</b>   |
| <b>Description</b>    | NSS question  |
| <b>Field type</b>     | Numeric   |
| <b>Min/Max occurs</b> | 1/1   |
| <b>Field length</b>   | 3   |
| <b>Parent entity</b>  | NSS   |
| <b>Derived from</b>   | National Student Survey (NSS)   |
| <b>Notes</b>          | This field shows the proportion of students who "agree" or "strongly agree" with question 8 on the NSS: "I have received detailed comments on my work". |

|                       |  |
|-----------------------|--|
| <b>Field name</b>     | <b>NSS.Q9</b>  |
| <b>Description</b>    | NSS question   |
| <b>Field type</b>     | Numeric  |
| <b>Min/Max occurs</b> | 1/1  |
| <b>Field length</b>   | 3  |
| <b>Parent entity</b>  | NSS  |
| <b>Derived from</b>   | National Student Survey (NSS)  |
| <b>Notes</b>          | This field shows the proportion of students who "agree" or "strongly agree" with question 9 on the NSS: "Feedback on my work has helped me clarify things I did not understand". |

|                       |   |
|-----------------------|---|
| <b>Field name</b>     | <b>NSS.Q10</b>  |
| <b>Description</b>    | NSS question  |
| <b>Field type</b>     | Numeric   |
| <b>Min/Max occurs</b> | 1/1   |
| <b>Field length</b>   | 3   |
| <b>Parent entity</b>  | NSS   |
| <b>Derived from</b>   | National Student Survey (NSS)   |
| <b>Notes</b>          | This field shows the proportion of students who "agree" or "strongly agree" with question 10 on the NSS: "I have received sufficient advice and support with my studies". |

|                       |  |
|-----------------------|--|
| <b>Field name</b>     | <b>NSS.Q11</b>   |
| <b>Description</b>    | NSS question   |
| <b>Field type</b>     | Numeric  |
| <b>Min/Max occurs</b> | 1/1  |
| <b>Field length</b>   | 3  |
| <b>Parent entity</b>  | NSS  |
| <b>Derived from</b>   | National Student Survey (NSS)  |
| <b>Notes</b>          | This field shows the proportion of students who "agree" or "strongly agree" with question 11 on the NSS: "I have been able to contact staff when I needed to". |



|                       |   |
|-----------------------|---|
| <b>Field name</b>     | <b>NSS.Q12</b>  |
| <b>Description</b>    | NSS question  |
| <b>Field type</b>     | Numeric   |
| <b>Min/Max occurs</b> | 1/1   |
| <b>Field length</b>   | 3   |
| <b>Parent entity</b>  | NSS   |
| <b>Derived from</b>   | National Student Survey (NSS)   |
| <b>Notes</b>          | This field shows the proportion of students who "agree" or "strongly agree" with question 12 on the NSS: "Good advice was available when I needed to make study choices". |

|                       |   |
|-----------------------|---|
| <b>Field name</b>     | <b>NSS.Q13</b>  |
| <b>Description</b>    | NSS question  |
| <b>Field type</b>     | Numeric   |
| <b>Min/Max occurs</b> | 1/1   |
| <b>Field length</b>   | 3   |
| <b>Parent entity</b>  | NSS   |
| <b>Derived from</b>   | National Student Survey (NSS)   |
| <b>Notes</b>          | This field shows the proportion of students who "agree" or "strongly agree" with question 13 on the NSS: "The timetable works efficiently as far as my activities are concerned". |

|                       |  |
|-----------------------|--|
| <b>Field name</b>     | <b>NSS.Q14</b>   |
| <b>Description</b>    | NSS question   |
| <b>Field type</b>     | Numeric  |
| <b>Min/Max occurs</b> | 1/1  |
| <b>Field length</b>   | 3  |
| <b>Parent entity</b>  | NSS  |
| <b>Derived from</b>   | National Student Survey (NSS)  |
| <b>Notes</b>          | This field shows the proportion of students who "agree" or "strongly agree" with question 14 on the NSS: "Any changes in the course or teaching have been communicated effectively". |

|                       |  |
|-----------------------|--|
| <b>Field name</b>     | <b>NSS.Q15</b>   |
| <b>Description</b>    | NSS question   |
| <b>Field type</b>     | Numeric  |
| <b>Min/Max occurs</b> | 1/1  |
| <b>Field length</b>   | 3  |
| <b>Parent entity</b>  | NSS  |
| <b>Derived from</b>   | National Student Survey (NSS)  |
| <b>Notes</b>          | This field shows the proportion of students who "agree" or "strongly agree" with question 15 on the NSS: "The course is well organised and is running smoothly". |

|                       |   |
|-----------------------|---|
| <b>Field name</b>     | <b>NSS.Q16</b>  |
| <b>Description</b>    | NSS question  |
| <b>Field type</b>     | Numeric   |
| <b>Min/Max occurs</b> | 1/1   |
| <b>Field length</b>   | 3   |
| <b>Parent entity</b>  | NSS   |
| <b>Derived from</b>   | National Student Survey (NSS)   |
| <b>Notes</b>          | This field shows the proportion of students who "agree" or "strongly agree" with question 16 on the NSS: "The library resources and services are good enough for my needs". |

|                       |  |
|-----------------------|--|
| <b>Field name</b>     | <b>NSS.Q17</b>   |
| <b>Description</b>    | NSS question   |
| <b>Field type</b>     | Numeric  |
| <b>Min/Max occurs</b> | 1/1  |
| <b>Field length</b>   | 3  |
| <b>Parent entity</b>  | NSS  |
| <b>Derived from</b>   | National Student Survey (NSS)  |
| <b>Notes</b>          | This field shows the proportion of students who "agree" or "strongly agree" with question 17 on the NSS: "I have been able to access general IT resources when I needed to". |

|                       |  |
|-----------------------|--|
| <b>Field name</b>     | <b>NSS.Q18</b>   |
| <b>Description</b>    | NSS question   |
| <b>Field type</b>     | Numeric  |
| <b>Min/Max occurs</b> | 1/1  |
| <b>Field length</b>   | 3  |
| <b>Parent entity</b>  | NSS  |
| <b>Derived from</b>   | National Student Survey (NSS)  |
| <b>Notes</b>          | This field shows the proportion of students who "agree" or "strongly agree" with question 18 on the NSS: "I have been able to access specialised equipment, facilities or rooms when I needed to". |

|                       |   |
|-----------------------|---|
| <b>Field name</b>     | <b>NSS.Q19</b>  |
| <b>Description</b>    | NSS question  |
| <b>Field type</b>     | Numeric   |
| <b>Min/Max occurs</b> | 1/1   |
| <b>Field length</b>   | 3   |
| <b>Parent entity</b>  | NSS   |
| <b>Derived from</b>   | National Student Survey (NSS)   |
| <b>Notes</b>          | This field shows the proportion of students who "agree" or "strongly agree" with question 19 on the NSS: "The course has helped me present myself with confidence". |

|                       |   |
|-----------------------|---|
| <b>Field name</b>     | <b>NSS.Q20</b>  |
| <b>Description</b>    | NSS question  |
| <b>Field type</b>     | Numeric   |
| <b>Min/Max occurs</b> | 1/1   |
| <b>Field length</b>   | 3   |
| <b>Parent entity</b>  | NSS   |
| <b>Derived from</b>   | National Student Survey (NSS)   |
| <b>Notes</b>          | This field shows the proportion of students who "agree" or "strongly agree" with question 20 on the NSS: "My communication skills have improved". |

|                       |   |
|-----------------------|---|
| <b>Field name</b>     | <b>NSS.Q21</b>  |
| <b>Description</b>    | NSS question  |
| <b>Field type</b>     | Numeric   |
| <b>Min/Max occurs</b> | 1/1   |
| <b>Field length</b>   | 3   |
| <b>Parent entity</b>  | NSS   |
| <b>Derived from</b>   | National Student Survey (NSS)   |
| <b>Notes</b>          | This field shows the proportion of students who "agree" or "strongly agree" with question 21 on the NSS: "As a result of the course, I feel confident in tackling unfamiliar problems". |

|                       |  |
|-----------------------|--|
| <b>Field name</b>     | <b>NSS.Q22</b>   |
| <b>Description</b>    | NSS question   |
| <b>Field type</b>     | Numeric  |
| <b>Min/Max occurs</b> | 1/1  |
| <b>Field length</b>   | 3  |
| <b>Parent entity</b>  | NSS  |
| <b>Derived from</b>   | National Student Survey (NSS)  |
| <b>Notes</b>          | This field shows the proportion of students who "agree" or "strongly agree" with question 22 on the NSS (or Q28 for NHSS): "Overall, I am satisfied with the quality of the course". |

## NHSNSS

|                    |   |
|--------------------|---|
| <b>Entity name</b> | <b>NHSNSS</b>   |
| Description        | This entity contains the results for the questions on the NSS for students on NHS funded courses. |
| Min/max occurs     | 0/3   |
| Parent entity      | KISCourse   |

The NHSNSS entity contains the following additional fields which are provided from National Student Survey:

|                       |  |
|-----------------------|--|
| <b>Field name</b>     | <b>NHSNSS.NHSPOP</b>   |
| <b>Description</b>    | Population   |
| <b>Field type</b>     | Numeric  |
| <b>Min/Max occurs</b> | 1/1  |
| <b>Field length</b>   | 5  |
| <b>Parent entity</b>  | NHSNSS   |
| <b>Derived from</b>   | National Student Survey (NSS)  |
| <b>Notes</b>          | This field displays the number of students in the population from which the NHSNSS data is derived for the KIS course. A full description of how the populations are created, and the rounding methodology employed is in Annex A. |

|                       |  |
|-----------------------|--|
| <b>Field name</b>     | <b>NHSNSS.NHSAGG</b>   |
| <b>Description</b>    | Aggregation level  |
| <b>Field type</b>     | Numeric  |
| <b>Min/Max occurs</b> | 1/1  |
| <b>Field length</b>   | 2  |
| <b>Parent entity</b>  | NHSNSS   |
| <b>Derived from</b>   | National Student Survey (NSS)  |
| <b>Notes</b>          | This field displays the aggregation level applied to the NHSNSS data for the KIS course. Details of the rounding and aggregation thresholds can be found in Annex A. |

|                       |  |
|-----------------------|--|
| <b>Field name</b>     | <b>NHSNSS.NHSSBJ</b>   |
| <b>Description</b>    | JACS level subject code  |
| <b>Field type</b>     | Numeric  |
| <b>Min/Max occurs</b> | 1/1  |
| <b>Field length</b>   | 3  |
| <b>Parent entity</b>  | NHSNSS   |
| <b>Derived from</b>   | National Student Survey (NSS)  |
| <b>Notes</b>          | This field displays the subject area for the KIS course. For most KISs this will be a code at level 3 in the JACS hierarchy. For a subject based KIS it will be a level 2 code. A full description of how this is derived is in Annex A. |

|                       |  |
|-----------------------|--|
| <b>Field name</b>     | <b>NHSNSS.Q1</b>   |
| <b>Description</b>    | NHS question for NSS   |
| <b>Field type</b>     | Numeric  |
| <b>Min/Max occurs</b> | 1/1  |
| <b>Field length</b>   | 3  |
| <b>Parent entity</b>  | NHSNSS   |
| <b>Derived from</b>   | National Student Survey (NSS)  |
| <b>Notes</b>          | This field shows the proportion of students on NHS funded courses who "agree" or "strongly agree" with question 22 on the NSS (NHS): "I received sufficient preparatory information prior to my placement(s)". |

|                       |   |
|-----------------------|---|
| <b>Field name</b>     | <b>NHSNSS.Q2</b>  |
| <b>Description</b>    | NHS question for NSS  |
| <b>Field type</b>     | Numeric   |
| <b>Min/Max occurs</b> | 1/1   |
| <b>Field length</b>   | 3   |
| <b>Parent entity</b>  | NHSNSS  |
| <b>Derived from</b>   | National Student Survey (NSS)   |
| <b>Notes</b>          | This field shows the proportion of students on NHS funded courses who "agree" or "strongly agree" with question 23 on the NSS (NHS): "I was allocated placement(s) suitable for my course". |

|                       |   |
|-----------------------|---|
| <b>Field name</b>     | <b>NHSNSS.Q3</b>  |
| <b>Description</b>    | NHS question for NSS  |
| <b>Field type</b>     | Numeric   |
| <b>Min/Max occurs</b> | 1/1   |
| <b>Field length</b>   | 3   |
| <b>Parent entity</b>  | NHSNSS  |
| <b>Derived from</b>   | National Student Survey (NSS)   |
| <b>Notes</b>          | This field shows the proportion of students on NHS funded courses who "agree" or "strongly agree" with question 24 on the NSS (NHS): "I received appropriate supervision on my placement(s)". |

|                       |  |
|-----------------------|--|
| <b>Field name</b>     | <b>NHSNSS.Q4</b>   |
| <b>Description</b>    | NHS question for NSS   |
| <b>Field type</b>     | Numeric  |
| <b>Min/Max occurs</b> | 1/1  |
| <b>Field length</b>   | 3  |
| <b>Parent entity</b>  | NHSNSS   |
| <b>Derived from</b>   | National Student Survey (NSS)  |
| <b>Notes</b>          | This field shows the proportion of students on NHS funded courses who "agree" or "strongly agree" with question 25 on the NSS (NHS): "I was given opportunities to meet my required practice learning outcomes/competences". |

|                       |   |
|-----------------------|---|
| <b>Field name</b>     | <b>NHSNSS.Q5</b>  |
| <b>Description</b>    | NHS question for NSS  |
| <b>Field type</b>     | Numeric   |
| <b>Min/Max occurs</b> | 1/1   |
| <b>Field length</b>   | 3   |
| <b>Parent entity</b>  | NHSNSS  |
| <b>Derived from</b>   | National Student Survey (NSS)   |
| <b>Notes</b>          | This field shows the proportion of students on NHS funded courses who "agree" or "strongly agree" with question 26 on the NSS (NHS): "My contribution during placement(s) as part of the clinical team was valued". |

|                       |   |
|-----------------------|---|
| <b>Field name</b>     | <b>NHSNSS.Q6</b>  |
| <b>Description</b>    | NHS question for NSS  |
| <b>Field type</b>     | Numeric   |
| <b>Min/Max occurs</b> | 1/1   |
| <b>Field length</b>   | 3   |
| <b>Parent entity</b>  | NHSNSS  |
| <b>Derived from</b>   | National Student Survey (NSS)   |
| <b>Notes</b>          | This field shows the proportion of students on NHS funded courses who "agree" or "strongly agree" with question 27 on the NSS (NHS): "My practice supervisor(s) understood how my placement(s) related to the broader requirements of my course". |

## Annex A: Rounding and aggregation

In order to avoid the risk of individual students being identified from parts of the Unistats data-set, some elements are rounded and/or aggregated with data from other, similar, students. In some cases it is not possible to publish parts of the Unistats data-set, owing to the small number of students in the population, or simply because some data were not collected (for example for new courses, and some courses provided by private providers). The lack of information about a particular course should not be used to draw negative inferences about the quality of the course. For each data item, data will be published at the first level in the list below where the population meets the required publication threshold:

- 1) KISCOURSE level – most recent year's data (AGG=14)
- 2) KISCOURSE level – most recent two years' data aggregated (AGG=24)
- 3) JACS level 3 (e.g. aerospace engineering) – most recent year's data (AGG=13)
- 4) JACS level 3 – most recent two years' data aggregated (AGG=23)
- 5) JACS level 2 (e.g. mechanically bases engineering) – most recent year's data (AGG=12)
- 6) JACS level 2 – most recent two years' data aggregated (AGG=22)
- 7) JACS level 1 (e.g. engineering and technology) – most recent year's data (AGG=11)
- 8) JACS level 1 – most recent two years' data aggregated (AGG=21)

For all items, a population of at least 22.5 students is required for the data to be published. Additionally, responses to the NSS are only published if at least 50 per-cent of the eligible population has responded.

All NSS data is published to the nearest percentage point. All other data are published to the nearest percentage point, unless there are at least 22.5 and less than 52.5 students in the population, in which case the data are rounded to the nearest five percentage points.

Salary information is only included if at least 50 per-cent of those in full time employment have provided the information. The salary data itself is not rounded, though respondents to the survey only give their salary to the nearest £1000.

The JACS subject hierarchy can be found at

[http://www.hefce.ac.uk/pubs/circllets/2005/cl08\\_05/cl08\\_05b.xls](http://www.hefce.ac.uk/pubs/circllets/2005/cl08_05/cl08_05b.xls)

## Annex B: Employment Statistics

The employment statistics included in the EMPLOYMENT entity of the Unistats data are taken from the Destination of Leavers in Higher Education Survey (DLHE), which surveys students six months after their course ends. It seeks to establish whether students are working (and if so what sort of work they are doing) and/or undertaking further study. Further information about the DLHE can be found at [www.hesa.ac.uk/C11018](http://www.hesa.ac.uk/C11018).

The data within the EMPLOYMENT entity are subject to aggregation and rounding as described in Annex A. Only students who meet the following criteria are included in the statistics:

- Studying one of the following undergraduate qualification codes (the coding frame is described at <http://www.hesa.ac.uk/C11051/A/COURSEAIM.html>): M22, M26, H00, H11, H16, H18, H22, H23, H50, I00, I11, I16, H41, H42, H43, H60, H61, H70, H71, H78, H79, H80, H81, H88, I60, I61, I70, I71, I74, I79, I80, I81, J10, J16, J20, J26, J30, J41, J42, J43, J45, J80, C20, C30, C41, C42, C43, C77
- Who haven't died (RSNEND does not equal 05)
- Are not recorded as dormant on the student record (MODE not 63 or 64)
- Are not studying abroad (LOCSDY='S')
- Have a UK or EU domicile
- Left the course between 1 August 2011 and 31 July 2012 (where two years' data are aggregated, students on the earlier year will have left their course between 1 August 2010 and 31 July 2011)
- Have not declined to complete the survey

The elements within the EMPLOYMENT entity are derived according to the responses on the DLHE survey as follows. Where 2011/12 data are used the data in the EMPLOYMENT entity are calculated using the XACTIVE02<sup>1</sup> derived field from the HESA DLHE record as follows:

|           |   |
|-----------|---|
| Element   | XACTIV02 (derived from ALLACT and MIMPACT in the DLHE record) |
| BOTH      | 03, 04  |
| ASSUNEMP  | 07, 08  |
| WORKSTUDY | This contains the sum of WORK, STUDY and BOTH                 |
| STUDY     | 05, 06  |
| WORK      | 01, 02  |
| NOAVAIL   | 09  |

A full definition of the Student.ALLACT field can be found at <http://www.hesa.ac.uk/C11018/A/ALLACT.html>

A full definition of the Student.MIMPACT field can be found at <http://www.hesa.ac.uk/C11018/A/MIMPACT.html>

Where 2010/11 data are used, the data are calculated as follows:

|           |  |                        |
|-----------|--|------------------------|
| Element   | EMPCIR field on DLHE   | MODSTUDY field on DLHE |
| BOTH      | 01, 02, 03, 15   | 1, 2                   |
| ASSUNEMP  | 11, 12   | 2, 3                   |
| WORKSTUDY | This contains the sum of WORK, STUDY and BOTH  |                        |
| STUDY     | EMPCIR=(11, 12, 13, 14, 17) and MODSTUDY=1<br>or<br>EMPCIR=(13, 14, 17) and MODSTUDY=2 |                        |
| WORK      | WORK 01,02, 03, 15   | 3                      |
| NOAVAIL   | Otherwise  |                        |

<sup>1</sup> The specification for XACTIV02 can be found at <http://www.hesa.ac.uk/content/view/2674/>

## Annex C: Derivation of salary location adjusted quartiles

### Overview

The location adjusted quartiles and medians for salary on the Unistats site are an attempt to calculate quartiles and medians using sector level data such that the proportion of leavers working in each region is the same for the sector figures as it is for the institution, this is achieved by weighting each response rather than taking a sample. For example, if 50% of the students in a given institution and subject go on to work in London whereas over the sector as a whole 20% work in London in calculating the sector figures students working in London would be weighted as 2.5 ( $50\% \div 20\%$ ).

This document details and provides an example of how the salary location adjusted quartiles presented on the Unistats website are produced.

### Methodology

In order to create the location adjustment it is necessary to obtain the total number of students<sup>1</sup> for three different populations. These are institution, sector and regional sector salary. The institution total is the total number of students for each different combination of institution, subject, mode, level and region. The sector total comes from the same grouping as used previously but without institution. For regional sector salary the total number of students is calculated for each combination of salary, mode, level, subject and region.

Next a weight is produced by dividing the institutions total number of students by the total number of students in the sector for each grouping of subject, mode, level and region. This weight is then multiplied by the regional sector salary total number of students for each combination of subject, mode, level, region and salary to create an institutional weighted number of students.

The total weighted institution student number is the sum of the weighted institution total for each combination of institution, subject, mode and level. The quartile points are produced by taking 25%, 50% and 75% of the institutional weighted total as the lower quartile, median and upper quartile points respectively.

The data is sorted by institution, subject, mode, level and salary so that the salary values are ascending. The institution weighted totals for each combination are added until they reach the lower quartile point. When the sum of the sector weighted total is greater than or equal to the lower quartile point and the previous total is less than the lower quartile point then the salary in that observation is recorded as the lower quartile. The institution weighted totals continue to be summed and the same methodology applies for the median and upper quartiles.

An example of how the location adjusted salary quartiles are produced is shown below.



**Worked example**

Take the following sample of students in table 1 who are studying the same subject with the same mode and level of study. Please note that before a location adjustment takes place all of the missing salary observations are removed and the salary figures are rounded to the nearest thousand.

**Table 1 – An example list of students**

| Institution | Region | Salary | Number of students |
|-------------|--------|--------|--------------------|
| 1           | A      | 10,000 | 1                  |
| 1           | B      | 20,000 | 3                  |
| 1           | A      | 20,000 | 4                  |
| 1           | B      | 23,000 | 5                  |
| 1           | C      | 30,000 | 1                  |
| 2           | A      | 15,000 | 2                  |
| 2           | B      | 20,000 | 3                  |
| 2           | B      | 22,000 | 4                  |
| 2           | A      | 29,000 | 2                  |
| 2           | C      | 35,000 | 3                  |
| 2           | C      | 25,000 | 1                  |
| 2           | A      | 24,000 | 1                  |

After the three different summaries have been calculated the weighted student numbers can be made and table 2 shows an example of these summaries and weighted student numbers using the data given in table 1.

**Table 2 – Summaries and weighted student numbers for the data shown in Table 1**

| Institution | Region | Salary | Institution FPE | Sector FPE | Regional Sector Salary FPE | Weighted FPE | Institution weighted FPE |
|-------------|--------|--------|-----------------|------------|----------------------------|--------------|--------------------------|
| 1           | A      | 10,000 | 5               | 10         | 1                          | 0.5          | 50.0                     |
| 1           | B      | 20,000 | 8               | 15         | 6                          | 0.5          | 320.0                    |
| 1           | A      | 20,000 | 5               | 10         | 4                          | 0.5          | 200.0                    |
| 1           | B      | 23,000 | 8               | 15         | 5                          | 0.5          | 266.7                    |
| 1           | C      | 30,000 | 1               | 5          | 1                          | 0.2          | 20.0                     |
| 2           | A      | 15,000 | 5               | 10         | 2                          | 0.5          | 100.0                    |
| 2           | B      | 20,000 | 7               | 15         | 6                          | 0.5          | 280.0                    |
| 2           | B      | 22,000 | 7               | 15         | 4                          | 0.5          | 186.7                    |
| 2           | A      | 24,000 | 5               | 10         | 1                          | 0.5          | 50.0                     |
| 2           | C      | 25,000 | 4               | 5          | 1                          | 0.8          | 80.0                     |
| 2           | A      | 29,000 | 5               | 10         | 2                          | 0.5          | 100.0                    |
| 2           | C      | 35,000 | 4               | 5          | 3                          | 0.8          | 240.0                    |

Finally, table 3 is an example of how the quartile points are used to determine which salary will be used for the lower quartile, median and upper quartile.

**Table 3 - Methodology used when calculating which salaries produce the quartiles**

| Institution | Salary | Previous weight | Total weight | Lower quartile point | Median point | Upper quartile point | Lower quartile | Median | Upper quartile | Institution total FPE |
|-------------|--------|-----------------|--------------|----------------------|--------------|----------------------|----------------|--------|----------------|-----------------------|
| 1           | 10,000 | 0.0             | 50.0         | 214.2                | 428.3        | 642.5                | 0              | 0      | 0              | 856.7                 |
| 1           | 20,000 | 50.0            | 370.0        | 214.2                | 428.3        | 642.5                | 20,000         | 0      | 0              | 856.7                 |
| 1           | 20,000 | 370.0           | 570.0        | 214.2                | 428.3        | 642.5                | 20,000         | 20,000 | 0              | 856.7                 |
| 1           | 23,000 | 570.0           | 836.7        | 214.2                | 428.3        | 642.5                | 20,000         | 20,000 | 23,000         | 856.7                 |
| 1           | 30,000 | 836.7           | 856.7        | 214.2                | 428.3        | 642.5                | 20,000         | 20,000 | 23,000         | 856.7                 |
| 2           | 15,000 | 0.0             | 100.0        | 259.2                | 518.3        | 777.5                | 0              | 0      | 0              | 1,036.7               |
| 2           | 20,000 | 100.0           | 380.0        | 259.2                | 518.3        | 777.5                | 20,000         | 0      | 0              | 1,036.7               |
| 2           | 22,000 | 380.0           | 566.7        | 259.2                | 518.3        | 777.5                | 20,000         | 22,000 | 0              | 1,036.7               |
| 2           | 24,000 | 566.7           | 616.7        | 259.2                | 518.3        | 777.5                | 20,000         | 22,000 | 0              | 1,036.7               |
| 2           | 25,000 | 616.7           | 696.7        | 259.2                | 518.3        | 777.5                | 20,000         | 22,000 | 0              | 1,036.7               |
| 2           | 29,000 | 696.7           | 796.7        | 259.2                | 518.3        | 777.5                | 20,000         | 22,000 | 29,000         | 1,036.7               |
| 2           | 35,000 | 796.7           | 1,036.7      | 259.2                | 518.3        | 777.5                | 20,000         | 22,000 | 29,000         | 1,036.7               |

## Annex D: Job types

Those students who reported their employment circumstances as working on the DLHE survey were also required to report their job title. This was then used to derive an occupation type category within the Standard Occupational Classification (SOC).

In 2012 HESA adopted the new SOC2010 Standard Occupational Classification (which replaced SOC2000). A variant of the SOC2010 was created for the coding of occupational information collected in the DLHE survey. The classification is termed SOC (DLHE) and further details are available on the HESA website (<http://www.hesa.ac.uk/content/view/102/143/1/9/>). Due to the changes in the SOC coding frame between 2010/11 and 2011/12, it is not appropriate to aggregate the two years of SOC data, therefore job type and professional or managerial jobs data only includes 2011/12 aggregations.

SOC categories were aggregated into 36 groups, according to the first one, two or three characters of the 5 digit SOC code. These groups are presented in the XML file as follows:

- 1 Managers, directors and senior officials
- 5 Skilled trades occupations
- 8 Process, plant and machine operatives
- 9 Elementary occupations
- 31 Science, engineering and technology associate professionals
- 33 Protective service occupations
- 35 Business and public service associate professionals
- 41 Administrative occupations
- 42 Secretarial and related occupations
- 62 Leisure, travel and related personal service occupations
- 71 Sales occupations
- 72 Customer service occupations
- 211 Natural and social science professionals
- 212 Engineering professionals
- 213 Information technology and telecommunications professionals
- 214 Conservation and environment professionals
- 215 Research and development managers
- 221 Health professionals
- 222 Therapy professionals
- 223 Nursing and midwifery professionals
- 231 Teaching and educational professionals
- 241 Legal professionals
- 242 Business, research and administrative professionals
- 243 Architects, town planners and surveyors
- 244 Welfare professionals
- 245 Librarians and related professionals
- 246 Quality and regulatory professionals
- 247 Media professionals
- 321 Health associate professionals
- 323 Welfare and housing associate professionals
- 341 Artistic, literary and media occupations
- 342 Design occupations
- 344 Sports and fitness occupations
- 612 Childcare and related personal services
- 613 Animal care and control services
- 614 Caring personal services

## Annex E: Entry qualifications

The data contained in the ENTRY entity are derived from the HESA student record, using data from the 2011/12 record when one year's worth of data are shown, and aggregating this with data from the 2010/11 record when two years' data are shown. The data in the ENTRY entity are subject to rounding and aggregation as described in Annex A.

The data in the ENTRY are calculated using the QVALENT3 field from the HESA student record, and the XQVALENT01 derived field<sup>2</sup>, as follows:

| Element    | Values of QVALENT3   | Values of XQVALENT01 |
|------------|----------------------|----------------------|
| ACCESS     | X00, X01             | F                    |
| A LEVEL    | <>P62, P63, X00, X01 | F                    |
| BACC       | P62, P63             | F                    |
| DEGREE     |                      | A, B, C              |
| FOUNDATION | J49                  | D                    |
| NOQUALS    |                      | H, I, J              |
| OTHER      |                      | E, G                 |
| OTHERHE    | <>J49                | D                    |

<sup>2</sup> The specification for XQVALENT01 can be found at <http://www.hesa.ac.uk/content/view/2479/>