

# KIS Unistats output file and check documentation definitions

Version 1.0 Produced 2015-07-30

## Introduction

Unistats, which incorporates the KIS, provides course level information on all undergraduate higher education courses provided in the UK, which are of at least one year's duration and consist of 120 or more credits of study. Full details of the Unistats' coverage are provided at [www.hesa.ac.uk/c15061/coverage](http://www.hesa.ac.uk/c15061/coverage).

The Unistats dataset consists of information provided directly by Higher education providers (HEPs), including Further education colleges (FECs) who offer courses of higher education. These data have been joined to a variety of sources including the Destinations of Leavers survey (to provide information on employment outcomes) and the National Student Survey (to provide information on student satisfaction). The Unistats dataset is used to populate the Unistats widgets, which HE providers display on the course pages of their website, and to populate the Unistats website. HE providers are able to update their Unistats data to add new courses, reflect changes in provision and correct data error during the year. Initial publication of the dataset is in September 2015 and updates will thereafter be made on a weekly basis and will be available to download from the HESA website (<http://www.hesa.ac.uk/unistatsdata>).

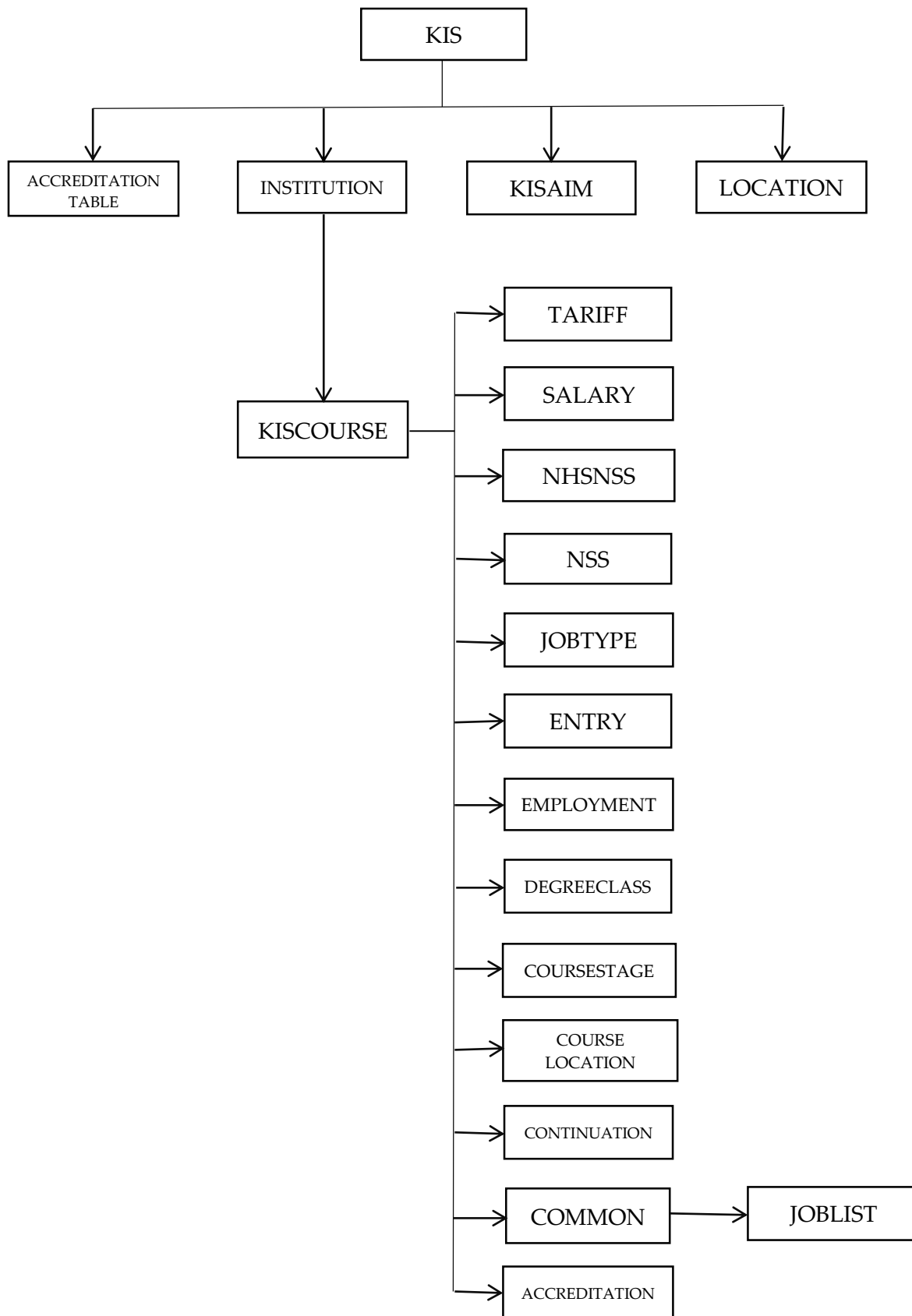
This document is provided to aid users' understanding of the fields contained within the Unistats dataset. The majority of the document consists of a series of tables explaining the definition of each field (or group of fields). When a field has been collected directly from the HE provider as part of the KIS collection, a link to its definition on the HESA website is provided. The annexes contain further information about how data are aggregated and rounded to prevent the potential identification of individuals, and how some fields are calculated.

The downloadable data contains a complete copy of the Unistats dataset provided in two different formats, a single XML file and 22 separate csv files. A separate link to a schema definition (xsd) file, describing the XML's structure has been provided. The diagram overleaf gives an overview of how the entities which comprise the Unistats data are related.

The Unistats file (XML) is provided singly to HE providers during data collection and at sector level following the initial publication of the dataset in the autumn. The file contains data items which are supplied by the HE provider as part of the KIS submission and a number of additional fields which are either derived or provided from other records such as the HESA Student and DLHE records, the ILR and the NSS.

The tables below contain details of the fields that are not provided directly by the HE provider as part of the KIS submission.

# Unistats structure 2014/15



## Institution

<b>Entity name</b>	<b>Institution</b>
Description	This entity contains fields relating to the reporting HE provider
Min/max occurs	1/unbounded
Parent entity	KIS
Notes	Further information and technical guidance on the fields submitted by the HE provider as part of this entity can be found at <a href="http://www.hesa.ac.uk/C15061/A/Institution.html">http://www.hesa.ac.uk/C15061/A/Institution.html</a> .

The Institution entity contains the following additional fields which are derived from the submitted data or provided from other records:

<b>Field name</b>	<b>Institution.PUBUKPRN</b>
Description	Publishing UKPRN
Field type	Numeric
Min/Max occurs	1/1
Field length	8
Parent entity	Institution
Notes	This is the HE provider where the course is primarily taught. If the course is taught at multiple HE providers, PUBUKPRN is set to the reporting HE provider. Therefore PUBUKPRN will always be unique.

<b>Field name</b>	<b>Institution.Q24</b>
Description	NSS question
Field type	Numeric
Min/Max occurs	0/1
Field length	3
Parent entity	Institution
Derived from	The NSS survey
Notes	Proportion of students who "agree" or "strongly agree" with question 24 on the NSS (Q 28 on the NHSNSS): "I am satisfied with the Students' Union at my institution". (Question 23 is not included in Unistats; this was for free text responses.)

<b>Field name</b>	<b>Institution.Q24POP</b>
Description	Population of students who responded to the NSS
Field type	Numeric
Min/Max occurs	0/1
Field length	5
Parent entity	Institution
Derived from	The NSS survey
Notes	The number of students who responded to the NSS in 2015 and therefore could contribute to Q24.

<b>Field name</b>	<b>Institution.COUNTRY</b>
Description	Country of HE provider
Field type	Numeric
Min/Max occurs	1/1
Field length	2
Parent entity	Institution
Derived from	UKPRN
Notes	This field records the country in which the main HE provider is located and is used for the purposes of validation

## KIS course

<b>Entity name</b>	<b>KISCourse</b>
<b>Description</b>	This entity contains elements relating to the KIS course
<b>Min/max occurs</b>	1/unbounded
<b>Parent entity</b>	KISCourse
<b>Notes</b>	Further information and technical guidance on the fields submitted by the HE provider as part of this entity can be found at <a href="http://www.hesa.ac.uk/C15061/A/KISCourse.html">http://www.hesa.ac.uk/C15061/A/KISCourse.html</a> .

The KISCourse entity contains the following additional fields which are derived from the submitted data:

<b>Field name</b>	<b>KISCourse.AVGCOURSEWORK</b>
<b>Description</b>	Average of the course assessed by coursework
<b>Field type</b>	Numeric
<b>Min/Max occurs</b>	0/1
<b>Field length</b>	3
<b>Parent entity</b>	KISCourse
<b>Derived from</b>	The KIS data file submitted by the HE provider
<b>Notes</b>	This is the average of the COURSEWORK element taken over all COURSESTAGEs which contain an element of assessment.

<b>Field name</b>	<b>KISCourse.AVGSCHEDULED</b>
<b>Description</b>	Average of course spent in scheduled learning and teaching activities
<b>Field type</b>	Numeric
<b>Min/Max occurs</b>	0/1
<b>Field length</b>	3
<b>Parent entity</b>	KISCourse
<b>Derived from</b>	The KIS data file submitted by the HE provider
<b>Notes</b>	This is the average of the SCHEDULED element taken over all COURSESTAGEs.

<b>Field name</b>	<b>KISCourse.AVGWRITTEN</b>
<b>Description</b>	Average of course assessed by written exams
<b>Field type</b>	Numeric
<b>Min/Max occurs</b>	0/1
<b>Field length</b>	3
<b>Parent entity</b>	KISCourse
<b>Derived from</b>	The KIS data file submitted by the HE provider
<b>Notes</b>	This is the average of the WRITTEN element taken over all COURSESTAGEs which contain an element of assessment.

<b>Field name</b>	<b>KISCourse.SBJ</b>
<b>Description</b>	JACS subject code
<b>Field type</b>	Alpha numeric
<b>Min/Max occurs</b>	0/unbounded
<b>Field length</b>	3
<b>Parent entity</b>	KISCourse
<b>Derived from</b>	For new courses this will be derived from the KISCourse.JACS or KISCourse.LDCS field. For courses where a link to a HESA or ILR course has been made the subject code will be derived from the HESA or ILR course.
<b>Notes</b>	The subject area within which the KIS sits. For most KIS instances, this will be a code at level 3 in the JACS3.0 hierarchy. For a subject based KIS it will be a level 2 code.

## Entry qualifications

<b>Entity name</b>	<b>Entry</b>
Description	This entity contains elements relating to the entry qualifications of students.
Min/max occurs	0/3
Parent entity	KISCourse

The Entry entity contains the following additional fields which are derived from HESA Student record and ILR:

<b>Field name</b>	<b>Entry.ENTPOP</b>
Description	Population
Field type	Numeric
Min/Max occurs	1/1
Field length	5
Parent entity	Entry
Derived from	HESA Student record/ILR
Notes	This field displays the number of students in the population from which the entry data is derived for the KIS course. A full description of how the populations are created, and the rounding methodology employed is in Annex A.

<b>Field name</b>	<b>Entry.ENTAGG</b>
Description	Aggregation level
Field type	Numeric
Min/Max occurs	1/1
Field length	2
Parent entity	Entry
Derived from	HESA Student record/ILR
Notes	This field displays the aggregation level applied to the entry data for the KIS course. Details of the rounding and aggregation thresholds can be found in Annex A.

<b>Field name</b>	<b>Entry.ENTSBJ</b>
Description	JACS level subject code
Field type	Numeric
Min/Max occurs	1/1
Field length	3
Parent entity	Entry
Derived from	HESA Student record/ILR
Notes	This field displays the subject area for the KIS course. For most KIS courses this will be a code at level 3 in the JACS hierarchy. For a subject based KIS it will be a level 2 code. A full description of how this is derived is in Annex A.

<b>Field name</b>	<b>Entry.ACCESS</b>
Description	Access course
Field type	Numeric
Min/Max occurs	1/1
Field length	3
Parent entity	Entry
Derived from	HESA Student record/ILR
Notes	This field shows the proportion of students whose highest qualification on entry is an access course. Specification: <a href="https://www.hesa.ac.uk/dox/ZDerived_Fields/UNISTATS_HIQUAL2_1.1.1.pdf">https://www.hesa.ac.uk/dox/ZDerived_Fields/UNISTATS_HIQUAL2_1.1.1.pdf</a>

<b>Field name</b>	<b>Entry.ALEVEL</b>
<b>Description</b>	A-levels and Highers
<b>Field type</b>	Numeric
<b>Min/Max occurs</b>	1/1
<b>Field length</b>	3
<b>Parent entity</b>	Entry
<b>Derived from</b>	HESA Student record/ILR
<b>Notes</b>	This field shows the proportion of students whose highest qualification on entry is A level or (Scottish) Highers. Specification: <a href="https://www.hesa.ac.uk/dox/ZDerived_Fields/UNISTATS_HIQUAL2_1.1.1.pdf">https://www.hesa.ac.uk/dox/ZDerived_Fields/UNISTATS_HIQUAL2_1.1.1.pdf</a>

<b>Field name</b>	<b>Entry.BACC</b>
<b>Description</b>	International baccalaureate
<b>Field type</b>	Numeric
<b>Min/Max occurs</b>	1/1
<b>Field length</b>	3
<b>Parent entity</b>	Entry
<b>Derived from</b>	HESA Student record/ILR
<b>Notes</b>	This field shows the proportion of students whose highest qualification on entry is an International Baccalaureate. Specification: <a href="https://www.hesa.ac.uk/dox/ZDerived_Fields/UNISTATS_HIQUAL2_1.1.1.pdf">https://www.hesa.ac.uk/dox/ZDerived_Fields/UNISTATS_HIQUAL2_1.1.1.pdf</a>

<b>Field name</b>	<b>Entry.DEGREE</b>
<b>Description</b>	Degree or higher
<b>Field type</b>	Numeric
<b>Min/Max occurs</b>	1/1
<b>Field length</b>	3
<b>Parent entity</b>	Entry
<b>Derived from</b>	HESA Student record/ILR
<b>Notes</b>	This field shows the proportion of students whose highest qualification on entry is a degree or higher qualification. Specification: <a href="https://www.hesa.ac.uk/dox/ZDerived_Fields/UNISTATS_HIQUAL2_1.1.1.pdf">https://www.hesa.ac.uk/dox/ZDerived_Fields/UNISTATS_HIQUAL2_1.1.1.pdf</a>

<b>Field name</b>	<b>Entry.FOUNDTN</b>
<b>Description</b>	Foundation course
<b>Field type</b>	Numeric
<b>Min/Max occurs</b>	1/1
<b>Field length</b>	3
<b>Parent entity</b>	Entry
<b>Derived from</b>	HESA Student record/ILR
<b>Notes</b>	This field shows the proportion of students whose highest qualification on entry is a foundation course. Specification: <a href="https://www.hesa.ac.uk/dox/ZDerived_Fields/UNISTATS_HIQUAL2_1.1.1.pdf">https://www.hesa.ac.uk/dox/ZDerived_Fields/UNISTATS_HIQUAL2_1.1.1.pdf</a>

<b>Field name</b>	<b>Entry.NOQUALS</b>
<b>Description</b>	No qualifications
<b>Field type</b>	Numeric
<b>Min/Max occurs</b>	1/1

<b>Field length</b>	3
<b>Parent entity</b>	Entry
<b>Derived from</b>	HESA Student record/ILR
<b>Notes</b>	This field shows the proportion of students with no qualifications on entry. Specification: <a href="https://www.hesa.ac.uk/dox/ZDerived_Fields/UNISTATS_HIQUAL2_1.1.1.pdf">https://www.hesa.ac.uk/dox/ZDerived_Fields/UNISTATS_HIQUAL2_1.1.1.pdf</a>

<b>Field name</b>	<b>Entry.OTHER</b>
<b>Description</b>	Other qualifications
<b>Field type</b>	Numeric
<b>Min/Max occurs</b>	1/1
<b>Field length</b>	3
<b>Parent entity</b>	Entry
<b>Derived from</b>	HESA Student record/ILR
<b>Notes</b>	This field shows the proportion of students with other qualifications on entry. Specification: <a href="https://www.hesa.ac.uk/dox/ZDerived_Fields/UNISTATS_HIQUAL2_1.1.1.pdf">https://www.hesa.ac.uk/dox/ZDerived_Fields/UNISTATS_HIQUAL2_1.1.1.pdf</a>

<b>Field name</b>	<b>Entry.OTHERHE</b>
<b>Description</b>	Other HE Qualification
<b>Field type</b>	Numeric
<b>Min/Max occurs</b>	1/1
<b>Field length</b>	3
<b>Parent entity</b>	Entry
<b>Derived from</b>	HESA Student record/ILR
<b>Notes</b>	This field shows the proportion of students whose highest qualification on entry is another HE qualification. Specification: <a href="https://www.hesa.ac.uk/dox/ZDerived_Fields/UNISTATS_HIQUAL2_1.1.1.pdf">https://www.hesa.ac.uk/dox/ZDerived_Fields/UNISTATS_HIQUAL2_1.1.1.pdf</a>

## Tariff

<b>Entity name</b>	<b>Tariff</b>
Description	This entity contains elements relating to the entry tariff points of students
Min/max occurs	0/3
Parent entity	KISCourse
Notes	The TARIFF entity shows the number of UCAS tariff points held by students who were previously enrolled on the KISCOURSE. These are not necessarily the minimum entry requirements for the course and you should check the university or college website for full information. The UCAS Tariff is the system for allocating points to qualifications used for entry to higher education. Universities and colleges can use the UCAS Tariff to make comparisons between applicants with different qualifications. Tariff points are often used in entry requirements, although other factors will often be taken into account by universities and colleges when deciding whether to offer places.  For further information on the UCAS Tariff, see the UCAS website <a href="http://www.ucas.com/students/ucas_tariff/">http://www.ucas.com/students/ucas_tariff/</a>

The Tariff entity contains the following additional fields which are derived from the HESA Student record and ILR:

<b>Field name</b>	<b>Tariff.TARPOP</b>
-------------------	----------------------

<b>Description</b>	Population
<b>Field type</b>	Numeric
<b>Min/Max occurs</b>	1/1
<b>Field length</b>	5
<b>Parent entity</b>	Tariff
<b>Derived from</b>	HESA Student record/ILR
<b>Notes</b>	This field displays the number of students in the population from which the tariff data is derived for the KIS course. A full description of how the populations are created, and the rounding methodology employed is in Annex A.

<b>Field name</b>	<b>Tariff.TARAGG</b>
<b>Description</b>	Aggregation level
<b>Field type</b>	Numeric
<b>Min/Max occurs</b>	1/1
<b>Field length</b>	2
<b>Parent entity</b>	Tariff
<b>Derived from</b>	HESA Student record/ILR
<b>Notes</b>	This field displays the aggregation level applied to the tariff data for the KIS course. Details of the rounding and aggregation thresholds can be found in Annex A.

<b>Field name</b>	<b>Tariff.TARSBJ</b>
<b>Description</b>	JACS level subject code
<b>Field type</b>	Numeric
<b>Min/Max occurs</b>	1/1
<b>Field length</b>	3
<b>Parent entity</b>	Tariff
<b>Derived from</b>	HESA Student record/ILR
<b>Notes</b>	This field displays the subject area for the KIS course. For most KIS courses this will be a code at level 3 in the JACS hierarchy. For a subject based KIS it will be a level 2 code. A full description of how this is derived is in Annex A.

<b>Field name</b>	<b>Tariff.T1</b>
<b>Description</b>	Less than 120 tariff points
<b>Field type</b>	Numeric
<b>Min/Max occurs</b>	1/1
<b>Field length</b>	3
<b>Parent entity</b>	Tariff
<b>Derived from</b>	HESA Student record/ILR
<b>Notes</b>	This field shows the proportion of entrants with less than 120 tariff points.

<b>Field name</b>	<b>Tariff.TXXX (XXX is a number)</b>
<b>Description</b>	Between xxx and (xxx+39) tariff points
<b>Field type</b>	Numeric
<b>Min/Max occurs</b>	1/1
<b>Field length</b>	3
<b>Parent entity</b>	Tariff
<b>Derived from</b>	HESA Student record/ILR
<b>Notes</b>	This field shows the proportion of entrants with between xxx and (xxx+39) tariff points.



<b>Field name</b>	<b>Tariff.T600</b>
<b>Description</b>	Over 600 tariff points
<b>Field type</b>	Numeric
<b>Min/Max occurs</b>	1/1
<b>Field length</b>	3
<b>Parent entity</b>	Tariff
<b>Derived from</b>	HESA Student record/ILR
<b>Notes</b>	This field shows the proportion of entrants with 600 or more tariff points.

## Continuation

<b>Entity name</b>	<b>Continuation</b>
Description	This entity contains elements relating to continuation information for students on the course.
Min/max occurs	0/3
Parent entity	KISCourse
Notes	The continuation data are derived by linking two successive years' of HESA student data. Records are linked using a unique identifier code on the student data (composed from HUSID+UKPRN+NUMHUS). The 2010/11 and 2011/12 student data have been linked when one year's worth of data are presented. This has been aggregated with the linked 2009/10 and 2010/11 student data when two years' data are shown. The continuation data are subject to rounding and aggregation as described in Annex A.

The Continuation entity contains the following additional fields which are derived from HESA Student record and ILR:

<b>Field name</b>	<b>Continuation.CONTPOP</b>
<b>Description</b>	Population
<b>Field type</b>	Numeric
<b>Min/Max occurs</b>	1/1
<b>Field length</b>	5
<b>Parent entity</b>	Continuation
<b>Derived from</b>	HESA Student record/ILR
<b>Notes</b>	This field displays the number of students in the population from which the continuation data is derived for the KIS course. A full description of how the populations are created, and the rounding methodology employed is in Annex A.

<b>Field name</b>	<b>Continuation.CONTAGG</b>
<b>Description</b>	Aggregation level
<b>Field type</b>	Numeric
<b>Min/Max occurs</b>	1/1
<b>Field length</b>	2
<b>Parent entity</b>	Continuation
<b>Derived from</b>	HESA Student record/ILR
<b>Notes</b>	This field displays the aggregation level applied to the continuation data for the KIS course. Details of the rounding and aggregation thresholds can be found in Annex A.

<b>Field name</b>	<b>Continuation.CONTSBJ</b>
<b>Description</b>	JACS level subject code

<b>Field type</b>	Numeric
<b>Min/Max occurs</b>	1/1
<b>Field length</b>	3
<b>Parent entity</b>	Continuation
<b>Derived from</b>	HESA Student record/ILR
<b>Notes</b>	This field displays the subject area for the KIS course. For most KIS instances this will be a code at level 3 in the JACS hierarchy. For a subject based KIS it will be a level 2 code. A full description of how this is derived is in Annex A.

<b>Field name</b>	<b>Continuation.UCONT</b>
<b>Description</b>	Continuing
<b>Field type</b>	Numeric
<b>Min/Max occurs</b>	1/1
<b>Field length</b>	3
<b>Parent entity</b>	Continuation
<b>Derived from</b>	HESA Student record/ILR
<b>Notes</b>	This field shows the proportion of students who continued on their course at the HE provider in the year after starting the course. Specifications: <a href="https://www.hesa.ac.uk/dox/ZDerived_Fields/UNISTATS_CONT_STAT_1.1.2.pdf">https://www.hesa.ac.uk/dox/ZDerived_Fields/UNISTATS_CONT_STAT_1.1.2.pdf</a> <a href="https://www.hesa.ac.uk/dox/ZDerived_Fields/UNISTATS_COURSEAIM_1.3.1.pdf">https://www.hesa.ac.uk/dox/ZDerived_Fields/UNISTATS_COURSEAIM_1.3.1.pdf</a> <a href="https://www.hesa.ac.uk/dox/ZDerived_Fields/UNISTATS_XQOBTN02_1.3.1.pdf">https://www.hesa.ac.uk/dox/ZDerived_Fields/UNISTATS_XQOBTN02_1.3.1.pdf</a> <a href="https://www.hesa.ac.uk/dox/ZDerived_Fields/UNISTATS_XPSR01_1.1.1.pdf">https://www.hesa.ac.uk/dox/ZDerived_Fields/UNISTATS_XPSR01_1.1.1.pdf</a>

<b>Field name</b>	<b>Continuation.UDORMANT</b>
<b>Description</b>	Dormant
<b>Field type</b>	Numeric
<b>Min/Max occurs</b>	1/1
<b>Field length</b>	3
<b>Parent entity</b>	Continuation
<b>Derived from</b>	HESA Student record/ILR
<b>Notes</b>	This field shows the proportion of students recorded as dormant the year after they entered HE. This calculation includes those students who have been recorded as dormant or writing-up status in the second of the comparison years, or those who have suspended their studies and who have not obtained a qualification. Specifications: <a href="https://www.hesa.ac.uk/dox/ZDerived_Fields/UNISTATS_CONT_STAT_1.1.2.pdf">https://www.hesa.ac.uk/dox/ZDerived_Fields/UNISTATS_CONT_STAT_1.1.2.pdf</a> <a href="https://www.hesa.ac.uk/dox/ZDerived_Fields/UNISTATS_COURSEAIM_1.3.1.pdf">https://www.hesa.ac.uk/dox/ZDerived_Fields/UNISTATS_COURSEAIM_1.3.1.pdf</a> <a href="https://www.hesa.ac.uk/dox/ZDerived_Fields/UNISTATS_XQOBTN02_1.3.1.pdf">https://www.hesa.ac.uk/dox/ZDerived_Fields/UNISTATS_XQOBTN02_1.3.1.pdf</a> <a href="https://www.hesa.ac.uk/dox/ZDerived_Fields/UNISTATS_XPSR01_1.1.1.pdf">https://www.hesa.ac.uk/dox/ZDerived_Fields/UNISTATS_XPSR01_1.1.1.pdf</a>

<b>Field name</b>	<b>Continuation.UGAINED</b>
<b>Description</b>	Gained intended or higher
<b>Field type</b>	Numeric
<b>Min/Max occurs</b>	1/1
<b>Field length</b>	3
<b>Parent entity</b>	Continuation
<b>Derived from</b>	HESA Student record/ILR
<b>Notes</b>	This field shows the proportion of students who gained their intended award (or higher) the year after they entered HE. For those students who are not progressing into the following year of study, this is defined as those students who have achieved a qualification in either of the two comparison years AND that qualification is deemed to be equivalent to or higher than the qualification aimed for in the first of the two comparison years.

	Specifications: <a href="https://www.hesa.ac.uk/dox/ZDerived_Fields/UNISTATS_CONT_STAT_1.1.2.pdf">https://www.hesa.ac.uk/dox/ZDerived_Fields/UNISTATS_CONT_STAT_1.1.2.pdf</a> <a href="https://www.hesa.ac.uk/dox/ZDerived_Fields/UNISTATS_COURSEAIM_1.3.1.pdf">https://www.hesa.ac.uk/dox/ZDerived_Fields/UNISTATS_COURSEAIM_1.3.1.pdf</a> <a href="https://www.hesa.ac.uk/dox/ZDerived_Fields/UNISTATS_XQOBTN02_1.3.1.pdf">https://www.hesa.ac.uk/dox/ZDerived_Fields/UNISTATS_XQOBTN02_1.3.1.pdf</a> <a href="https://www.hesa.ac.uk/dox/ZDerived_Fields/UNISTATS_XPSR01_1.1.1.pdf">https://www.hesa.ac.uk/dox/ZDerived_Fields/UNISTATS_XPSR01_1.1.1.pdf</a>
--	---

<b>Field name</b>	<b>Continuation.ULEFT</b>
<b>Description</b>	Left without award
<b>Field type</b>	Numeric
<b>Min/Max occurs</b>	1/1
<b>Field length</b>	3
<b>Parent entity</b>	Continuation
<b>Derived from</b>	HESA Student record/ILR
<b>Notes</b>	<p>This field shows the proportion of students who are not continuing into their following year of study, have not been awarded a qualification in either of the two comparison years and are not recorded with a dormant status.</p> <p>Specifications:  <a href="https://www.hesa.ac.uk/dox/ZDerived_Fields/UNISTATS_CONT_STAT_1.1.2.pdf">https://www.hesa.ac.uk/dox/ZDerived_Fields/UNISTATS_CONT_STAT_1.1.2.pdf</a>  <a href="https://www.hesa.ac.uk/dox/ZDerived_Fields/UNISTATS_COURSEAIM_1.3.1.pdf">https://www.hesa.ac.uk/dox/ZDerived_Fields/UNISTATS_COURSEAIM_1.3.1.pdf</a>  <a href="https://www.hesa.ac.uk/dox/ZDerived_Fields/UNISTATS_XQOBTN02_1.3.1.pdf">https://www.hesa.ac.uk/dox/ZDerived_Fields/UNISTATS_XQOBTN02_1.3.1.pdf</a>  <a href="https://www.hesa.ac.uk/dox/ZDerived_Fields/UNISTATS_XPSR01_1.1.1.pdf">https://www.hesa.ac.uk/dox/ZDerived_Fields/UNISTATS_XPSR01_1.1.1.pdf</a></p>

<b>Field name</b>	<b>Continuation.ULOWER</b>
<b>Description</b>	Gained lower
<b>Field type</b>	Numeric
<b>Min/Max occurs</b>	1/1
<b>Field length</b>	3
<b>Parent entity</b>	Continuation
<b>Derived from</b>	HESA Student record/ILR
<b>Notes</b>	<p>This field shows the proportion of students who gained a lower award than the one originally intended the year after they entered HE. For those students who are not progressing into the following year of study, this is defined as those students who have achieved a qualification in either of the two comparison years AND that qualification is deemed to be lower than the qualification aimed for in the first of the two comparison years.</p> <p>Specifications:  <a href="https://www.hesa.ac.uk/dox/ZDerived_Fields/UNISTATS_CONT_STAT_1.1.2.pdf">https://www.hesa.ac.uk/dox/ZDerived_Fields/UNISTATS_CONT_STAT_1.1.2.pdf</a>  <a href="https://www.hesa.ac.uk/dox/ZDerived_Fields/UNISTATS_COURSEAIM_1.3.1.pdf">https://www.hesa.ac.uk/dox/ZDerived_Fields/UNISTATS_COURSEAIM_1.3.1.pdf</a>  <a href="https://www.hesa.ac.uk/dox/ZDerived_Fields/UNISTATS_XQOBTN02_1.3.1.pdf">https://www.hesa.ac.uk/dox/ZDerived_Fields/UNISTATS_XQOBTN02_1.3.1.pdf</a>  <a href="https://www.hesa.ac.uk/dox/ZDerived_Fields/UNISTATS_XPSR01_1.1.1.pdf">https://www.hesa.ac.uk/dox/ZDerived_Fields/UNISTATS_XPSR01_1.1.1.pdf</a></p>

## Degree Classification

<b>Entity name</b>	<b>DegreeClass</b>
<b>Description</b>	This entity contains elements relating to the degree classifications obtained by students.
<b>Min/max occurs</b>	0/3
<b>Parent entity</b>	KISCourse
<b>Notes</b>	The degree classification data is provided from the HESA Student record and the ILR.

The DegreeClass entity contains the following additional fields which are provided from the HESA Student record and ILR:

<b>Field name</b>	<b>DegreeClass.DEGPOP</b>
<b>Description</b>	Population

<b>Field type</b>	Numeric
<b>Min/Max occurs</b>	1/1
<b>Field length</b>	5
<b>Parent entity</b>	DegreeClass
<b>Derived from</b>	HESA Student record/ILR
<b>Notes</b>	This field displays the number of students in the population from which the degree classification data is derived for the KIS course. A full description of how the populations are created, and the rounding methodology employed is in Annex A.

<b>Field name</b>	<b>DegreeClass.DEGAGG</b>
<b>Description</b>	Aggregation level
<b>Field type</b>	Numeric
<b>Min/Max occurs</b>	1/1
<b>Field length</b>	2
<b>Parent entity</b>	DegreeClass
<b>Derived from</b>	HESA Student record/ILR
<b>Notes</b>	This field displays the aggregation level applied to the degree classification data for the KIS course. Details of the rounding and aggregation thresholds can be found in Annex A.

<b>Field name</b>	<b>DegreeClass.DEGSBJ</b>
<b>Description</b>	JACS level subject code
<b>Field type</b>	Numeric
<b>Min/Max occurs</b>	1/1
<b>Field length</b>	3
<b>Parent entity</b>	DegreeClass
<b>Derived from</b>	HESA Student record/ILR
<b>Notes</b>	This field displays the subject area for the KIS course. For most KIS instances this will be a code at level 3 in the JACS hierarchy. For a subject based KIS it will be a level 2 code. A full description of how this is derived is in Annex A.

<b>Field name</b>	<b>DegreeClass.UFIRST</b>
<b>Description</b>	First class
<b>Field type</b>	Numeric
<b>Min/Max occurs</b>	1/1
<b>Field length</b>	3
<b>Parent entity</b>	DegreeClass
<b>Derived from</b>	HESA Student record/ILR
<b>Notes</b>	This field shows the proportion of students gaining a first class degree (QualificationsAwarded.CLASS=01 in the HESA Student record.) Specification: <a href="https://www.hesa.ac.uk/dox/ZDerived_Fields/UNISTATS_CLASS_3.1.2.pdf">https://www.hesa.ac.uk/dox/ZDerived_Fields/UNISTATS_CLASS_3.1.2.pdf</a>

<b>Field name</b>	<b>DegreeClass.UUPPER</b>
<b>Description</b>	Upper second class (2:1)
<b>Field type</b>	Numeric
<b>Min/Max occurs</b>	1/1
<b>Field length</b>	3
<b>Parent entity</b>	DegreeClass
<b>Derived from</b>	HESA Student record/ILR
<b>Notes</b>	This field shows the proportion of students gaining an upper second class (2:1) degree (QualificationsAwarded.CLASS=02 in the HESA Student record.) Specification: <a href="https://www.hesa.ac.uk/dox/ZDerived_Fields/UNISTATS_CLASS_3.1.2.pdf">https://www.hesa.ac.uk/dox/ZDerived_Fields/UNISTATS_CLASS_3.1.2.pdf</a>

--	--

<b>Field name</b>	<b>DegreeClass.ULOWER</b>
<b>Description</b>	Lower (or undivided) second class
<b>Field type</b>	Numeric
<b>Min/Max occurs</b>	1/1
<b>Field length</b>	3
<b>Parent entity</b>	DegreeClass
<b>Derived from</b>	HESA Student record/ILR
<b>Notes</b>	This field shows the proportion of students gaining a lower (or undivided) second class (2:1) degree (QualificationsAwarded.CLASS=03, 04 in the HESA Student record.) Specification: <a href="https://www.hesa.ac.uk/dox/ZDerived_Fields/UNISTATS_CLASS_3.1.2.pdf">https://www.hesa.ac.uk/dox/ZDerived_Fields/UNISTATS_CLASS_3.1.2.pdf</a>

<b>Field name</b>	<b>DegreeClass.UOTHER</b>
<b>Description</b>	Other honours
<b>Field type</b>	Numeric
<b>Min/Max occurs</b>	1/1
<b>Field length</b>	3
<b>Parent entity</b>	Degree class
<b>Derived from</b>	HESA Student record/ILR
<b>Notes</b>	This field shows the proportion of students gaining an other honours degree (QualificationsAwarded.CLASS=05, 06, 09 in the HESA Student record.) Specification: <a href="https://www.hesa.ac.uk/dox/ZDerived_Fields/UNISTATS_CLASS_3.1.2.pdf">https://www.hesa.ac.uk/dox/ZDerived_Fields/UNISTATS_CLASS_3.1.2.pdf</a>

<b>Field name</b>	<b>DegreeClass.UORDINARY</b>
<b>Description</b>	Ordinary
<b>Field type</b>	Numeric
<b>Min/Max occurs</b>	1/1
<b>Field length</b>	3
<b>Parent entity</b>	DegreeClass
<b>Derived from</b>	HESA Student record/ILR
<b>Notes</b>	This field shows the proportion of students gaining an ordinary degree (QualificationsAwarded.CLASS=10 in the HESA Student record.) Specification: <a href="https://www.hesa.ac.uk/dox/ZDerived_Fields/UNISTATS_CLASS_3.1.2.pdf">https://www.hesa.ac.uk/dox/ZDerived_Fields/UNISTATS_CLASS_3.1.2.pdf</a>

<b>Field name</b>	<b>DegreeClass.UNA</b>
<b>Description</b>	Not classified
<b>Field type</b>	Numeric
<b>Min/Max occurs</b>	1/1
<b>Field length</b>	3
<b>Parent entity</b>	DegreeClass
<b>Derived from</b>	HESA Student record/ILR
<b>Notes</b>	This field shows the proportion of students gaining a not classified degree (QualificationsAwarded.CLASS=07, 08, 11, 12, 13, 14 in the HESA Student record.) Specification: <a href="https://www.hesa.ac.uk/dox/ZDerived_Fields/UNISTATS_CLASS_3.1.2.pdf">https://www.hesa.ac.uk/dox/ZDerived_Fields/UNISTATS_CLASS_3.1.2.pdf</a>

## Employment statistics

<b>Entity name</b>	<b>Employment</b>
Description	This entity contains elements relating to the employment outcomes students.
Min/max occurs	0/3
Parent entity	KISCourse
Notes	This entity contains fields relating to the employment outcome of students. The employment statistics included in the EMPLOYMENT entity of the Unistats data are taken from the Destination of Leavers in Higher Education Survey (DLHE), which surveys students six months after their course ends. It seeks to establish whether students are working (and if so what sort of work they are doing) and/or undertaking further study.

The Employment entity contains the following additional fields which are provided from DLHE Survey:

<b>Field name</b>	<b>Employment.EMPOP</b>
Description	Population
Field type	Numeric
Min/Max occurs	1/1
Field length	5
Parent entity	Employment
Derived from	Destination of Leavers in Higher Education Survey (DLHE)
Notes	This field displays the number of students in the population from which the employment data is derived for the KIS course. A full description of how the populations are created, and the rounding methodology employed is in Annex A.

<b>Field name</b>	<b>Employment.EMPAGG</b>
Description	Aggregation level
Field type	Numeric
Min/Max occurs	1/1
Field length	2
Parent entity	Employment
Derived from	Destination of Leavers in Higher Education Survey (DLHE)
Notes	This field displays the aggregation level applied to the employment data for the KIS course. Details of the rounding and aggregation thresholds can be found in Annex A.

<b>Field name</b>	<b>Employment.EMPSBJ</b>
Description	JACS level subject code
Field type	Numeric
Min/Max occurs	1/1
Field length	3
Parent entity	Employment
Derived from	Destination of Leavers in Higher Education Survey (DLHE)
Notes	This field displays the subject area for the KIS course. For most KIS instances this will be a code at level 3 in the JACS hierarchy. For a subject based KIS it will be a level 2 code. A full description of how this is derived is in Annex A.

<b>Field name</b>	<b>Employment.WORKSTUDY</b>
Description	Proportion of students in work and/or study
Field type	Numeric
Min/Max occurs	1/1
Field length	3
Parent entity	Employment
Derived from	Destination of Leavers in Higher Education Survey (DLHE)

<b>Notes</b>	This field shows the proportion of students who are recorded as BOTH, WORK or STUDY six months after their course ended. Specification: <a href="https://www.hesa.ac.uk/dox/ZDerived_Fields/UNISTATS_ACTIVITY_1.2.2.pdf">https://www.hesa.ac.uk/dox/ZDerived_Fields/UNISTATS_ACTIVITY_1.2.2.pdf</a>
--------------	--

<b>Field name</b>	<b>Employment.STUDY</b>
<b>Description</b>	Proportion of students studying only
<b>Field type</b>	Numeric
<b>Min/Max occurs</b>	1/1
<b>Field length</b>	3
<b>Parent entity</b>	Employment
<b>Derived from</b>	Destination of Leavers in Higher Education Survey (DLHE)
<b>Notes</b>	This field shows the proportion of students who are undertaking further study six months after their course ended. Specification: <a href="https://www.hesa.ac.uk/dox/ZDerived_Fields/UNISTATS_ACTIVITY_1.2.2.pdf">https://www.hesa.ac.uk/dox/ZDerived_Fields/UNISTATS_ACTIVITY_1.2.2.pdf</a>

<b>Field name</b>	<b>Employment.ASSUNEMP</b>
<b>Description</b>	Proportion of students assumed unemployed
<b>Field type</b>	Numeric
<b>Min/Max occurs</b>	1/1
<b>Field length</b>	3
<b>Parent entity</b>	Employment
<b>Derived from</b>	Destination of Leavers in Higher Education Survey (DLHE)
<b>Notes</b>	This field shows the proportion of students assumed to be unemployed six months after their course ended. Specification: <a href="https://www.hesa.ac.uk/dox/ZDerived_Fields/UNISTATS_ACTIVITY_1.2.2.pdf">https://www.hesa.ac.uk/dox/ZDerived_Fields/UNISTATS_ACTIVITY_1.2.2.pdf</a>

<b>Field name</b>	<b>Employment.BOTH</b>
<b>Description</b>	Proportion of students in work and study
<b>Field type</b>	Numeric
<b>Min/Max occurs</b>	1/1
<b>Field length</b>	3
<b>Parent entity</b>	Employment
<b>Derived from</b>	Destination of Leavers in Higher Education Survey (DLHE)
<b>Notes</b>	This field shows the proportion of students in work and study six months after their course ended. Specification: <a href="https://www.hesa.ac.uk/dox/ZDerived_Fields/UNISTATS_ACTIVITY_1.2.2.pdf">https://www.hesa.ac.uk/dox/ZDerived_Fields/UNISTATS_ACTIVITY_1.2.2.pdf</a>

<b>Field name</b>	<b>Employment.NOAVAIL</b>
<b>Description</b>	Proportion of students not available for work or study
<b>Field type</b>	Numeric
<b>Min/Max occurs</b>	1/1
<b>Field length</b>	3
<b>Parent entity</b>	Employment
<b>Derived from</b>	Destination of Leavers in Higher Education Survey (DLHE)
<b>Notes</b>	This field shows the proportion of students who are not available for work or study six months after their course ended. Specification: <a href="https://www.hesa.ac.uk/dox/ZDerived_Fields/UNISTATS_ACTIVITY_1.2.2.pdf">https://www.hesa.ac.uk/dox/ZDerived_Fields/UNISTATS_ACTIVITY_1.2.2.pdf</a>

<b>Field name</b>	<b>Employment.WORK</b>
<b>Description</b>	Proportion of students working only
<b>Field type</b>	Numeric
<b>Min/Max occurs</b>	1/1
<b>Field length</b>	3
<b>Parent entity</b>	Employment
<b>Derived from</b>	Destination of Leavers in Higher Education Survey (DLHE)
<b>Notes</b>	This field shows the proportion of students in work six months after their course ended. Specification: <a href="https://www.hesa.ac.uk/dox/ZDerived_Fields/UNISTATS_ACTIVITY_1.2.2.pdf">https://www.hesa.ac.uk/dox/ZDerived_Fields/UNISTATS_ACTIVITY_1.2.2.pdf</a>

## Common job types

<b>Entity name</b>	<b>Common</b>
<b>Description</b>	This entity contains elements relating to common job types obtained by students taking the course.
<b>Min/max occurs</b>	0/3
<b>Parent entity</b>	KISCourse
<b>Notes</b>	The data included in the Common entity of the Unistats data are taken from the Destination of Leavers in Higher Education Survey (DLHE), which surveys students six months after their course ends. It seeks to establish whether students are working (and if so what sort of work they are doing) and/or undertaking further study.

The Common entity contains the following additional fields which are provided from DLHE Survey:

<b>Field name</b>	<b>Common.COMPOP</b>
<b>Description</b>	Population
<b>Field type</b>	Numeric
<b>Min/Max occurs</b>	1/1
<b>Field length</b>	5
<b>Parent entity</b>	Common
<b>Derived from</b>	Destination of Leavers in Higher Education Survey (DLHE)
<b>Notes</b>	This field displays the number of students in the population from which the common job type data is derived for the KIS course. A full description of how the populations are created, and the rounding methodology employed is in Annex A.

<b>Field name</b>	<b>Common.COMAGG</b>
<b>Description</b>	Aggregation level
<b>Field type</b>	Numeric
<b>Min/Max occurs</b>	1/1
<b>Field length</b>	2
<b>Parent entity</b>	Common
<b>Derived from</b>	Destination of Leavers in Higher Education Survey (DLHE)
<b>Notes</b>	This field displays the aggregation level applied to the common job type data for the KIS course. Details of the rounding and aggregation thresholds can be found in Annex A.

<b>Field name</b>	<b>Common.COMSBJ</b>
<b>Description</b>	JACS level subject code
<b>Field type</b>	Numeric
<b>Min/Max occurs</b>	1/1
<b>Field length</b>	3



<b>Parent entity</b>	Common
<b>Derived from</b>	Destination of Leavers in Higher Education Survey (DLHE)
<b>Notes</b>	This field displays the subject area for the KIS course. For most KIS instances this will be a code at level 3 in the JACS hierarchy. For a subject based KIS it will be a level 2 code. A full description of how this is derived is in Annex A.

## Job list

<b>Entity name</b>	<b>JobList</b>
Description	This entity contains information about a common job type obtained by students.
Min/max occurs	1/10
Parent entity	KISCourse
Notes	Those students who reported their employment circumstances as working on the DLHE survey were also required to report their job title. This was then used to derive an occupation type category within the Standard Occupational Classification (SOC) using the SOC2010 coding frame. Further details are available on the HESA website ( <a href="http://www.hesa.ac.uk/content/view/2536/">http://www.hesa.ac.uk/content/view/2536/</a> ).

The JobList entity contains the following additional fields which are provided from DLHE Survey:

<b>Field name</b>	<b>Joblist.JOB</b>
Description	The type of employment
Field type	String
Min/Max occurs	1/1
Field length	80
Parent entity	Joblist
Derived from	Destination of Leavers in Higher Education Survey (DLHE)
Notes	SOC categories were aggregated into 36 groups, according to the first one, two or three characters of the 5 digit SOC code. Specification: <a href="https://www.hesa.ac.uk/dox/ZDerived_Fields/UNISTATS_JOB_1.1.1.pdf">https://www.hesa.ac.uk/dox/ZDerived_Fields/UNISTATS_JOB_1.1.1.pdf</a>

<b>Field name</b>	<b>Joblist.PERC</b>
Description	The percentage of students in the type of employment
Field type	Numeric
Min/Max occurs	1/1
Field length	3
Parent entity	Joblist
Derived from	Destination of Leavers in Higher Education Survey (DLHE)
Notes	This field displays the aggregation level applied to the common job types data for the KIS course. Details of the rounding and aggregation thresholds can be found in Annex A.

<b>Field name</b>	<b>Joblist.ORDER</b>
Description	The order to display the jobs in
Field type	Numeric
Min/Max occurs	1/1
Field length	5
Parent entity	Joblist
Derived from	Destination of Leavers in Higher Education Survey (DLHE)
Notes	The order to display the jobs on the Unistats website. This provides a fixed ordering according to percentage of students in each job even where the rounded percentages are

	equal. (Ordered by the highest %age then SOC ascending, where SOC is treated as a character, so 10 is ordered above 9)
--	--

## Job type

<b>Entity name</b>	<b>JobType</b>
Description	This entity contains elements relating to the types of profession entered by students.
Min/max occurs	0/3
Parent entity	KISCourse
Notes	Those students who reported their employment circumstances as working on the DLHE survey were also required to report their job title. This was then used to derive an occupation type category within the Standard Occupational Classification (SOC).

The JobType entity contains the following additional fields which are provided from DLHE Survey:

<b>Field name</b>	<b>JobType.JOBPOP</b>
Description	Population
Field type	Numeric
Min/Max occurs	1/1
Field length	5
Parent entity	JobType
Derived from	Destination of Leavers in Higher Education Survey (DLHE)
Notes	This field displays the number of students in the population from which the job type data is derived for the KIS course. A full description of how the populations are created, and the rounding methodology employed is in Annex A. Job type includes aggregations of 2011/12 and 2012/13 data.

<b>Field name</b>	<b>JobType.JOBAGG</b>
Description	Aggregation level
Field type	Numeric
Min/Max occurs	1/1
Field length	2
Parent entity	JobType
Derived from	Destination of Leavers in Higher Education Survey (DLHE)
Notes	This field displays the aggregation level applied to the job type data for the KIS course. Details of the rounding and aggregation thresholds can be found in Annex A. Job type includes aggregations of 2011/12 and 2012/13 data.

<b>Field name</b>	<b>JobType.JOBSBJ</b>
Description	JACS level subject code
Field type	Numeric
Min/Max occurs	1/1
Field length	3
Parent entity	JobType
Derived from	Destination of Leavers in Higher Education Survey (DLHE)
Notes	This field displays the subject area for the KIS course. For most KIS instances this will be a code at level 3 in the JACS hierarchy. For a subject based KIS it will be a level 2 code. A full description of how this is derived is in Annex A.

<b>Field name</b>	<b>JobType.PROFMAN</b>
Description	Professional or managerial jobs
Field type	Numeric
Min/Max occurs	1/1

<b>Field length</b>	3
<b>Parent entity</b>	JobType
<b>Derived from</b>	Destination of Leavers in Higher Education Survey (DLHE)
<b>Notes</b>	This field is derived from the SOC2010 (DLHE) codes ( <a href="http://www.hesa.ac.uk/content/view/102/143/1/12">http://www.hesa.ac.uk/content/view/102/143/1/12</a> ). It gives the proportion of students in professional or managerial jobs. These are defined as those students whose occupation code starts with 1, 2 or 3. Specification: <a href="https://www.hesa.ac.uk/dox/ZDerived_Fields/UNISTATS_PROF_JOB_1.1.3.pdf">https://www.hesa.ac.uk/dox/ZDerived_Fields/UNISTATS_PROF_JOB_1.1.3.pdf</a>

<b>Field name</b>	<b>JobType.OTHERJOB</b>
<b>Description</b>	Non professional or managerial jobs
<b>Field type</b>	Numeric
<b>Min/Max occurs</b>	1/1
<b>Field length</b>	3
<b>Parent entity</b>	JobType
<b>Derived from</b>	Destination of Leavers in Higher Education Survey (DLHE)
<b>Notes</b>	This field is derived from the SOC2010 (DLHE) codes ( <a href="http://www.hesa.ac.uk/content/view/102/143/1/12">http://www.hesa.ac.uk/content/view/102/143/1/12</a> ). It gives the proportion of students in non-professional or managerial jobs. These are defined as those students whose SOC2010 starts with 4, 5, 6, 7, 8 or 9. Specification: <a href="https://www.hesa.ac.uk/dox/ZDerived_Fields/UNISTATS_PROF_JOB_1.1.3.pdf">https://www.hesa.ac.uk/dox/ZDerived_Fields/UNISTATS_PROF_JOB_1.1.3.pdf</a>

<b>Field name</b>	<b>JobType.UNKWN</b>
<b>Description</b>	Unable to classify/unknown
<b>Field type</b>	Numeric
<b>Min/Max occurs</b>	1/1
<b>Field length</b>	3
<b>Parent entity</b>	JobType
<b>Derived from</b>	Destination of Leavers in Higher Education Survey (DLHE)
<b>Notes</b>	This field is derived from the SOC2010 (DLHE) codes ( <a href="http://www.hesa.ac.uk/content/view/102/143/1/12">http://www.hesa.ac.uk/content/view/102/143/1/12</a> ). It gives the proportion of students whose job classification cannot be derived, or whose SOC code is unknown. These are defined as those students whose SOC2010 is 0 or Null. Specification: <a href="https://www.hesa.ac.uk/dox/ZDerived_Fields/UNISTATS_PROF_JOB_1.1.3.pdf">https://www.hesa.ac.uk/dox/ZDerived_Fields/UNISTATS_PROF_JOB_1.1.3.pdf</a>

## Salary

<b>Entity name</b>	<b>Salary</b>
<b>Description</b>	This entity contains elements relating to the salary information of students.
<b>Min/max occurs</b>	0/3
<b>Parent entity</b>	KISCourse
<b>Notes</b>	Those students who reported their employment circumstances as working on the DLHE and/or Longitudinal DLHE survey were also asked to report their salary.

The Salary entity contains the following additional fields which are provided from DLHE Survey:

<b>Field name</b>	<b>Salary.SALPOP</b>
<b>Description</b>	Population
<b>Field type</b>	Numeric
<b>Min/Max occurs</b>	1/1

<b>Field length</b>	5
<b>Parent entity</b>	Salary
<b>Derived from</b>	Destination of Leavers in Higher Education Survey (DLHE)
<b>Notes</b>	This field displays the number of students in the population from which the salary data is derived for the KIS course. A full description of how the populations are created, and the rounding methodology employed is in Annex A.

<b>Field name</b>	<b>Salary.SALAGG</b>
<b>Description</b>	Aggregation level
<b>Field type</b>	Numeric
<b>Min/Max occurs</b>	1/1
<b>Field length</b>	2
<b>Parent entity</b>	Salary
<b>Derived from</b>	Destination of Leavers in Higher Education Survey (DLHE)
<b>Notes</b>	This field displays the aggregation level applied to the salary data for the KIS course. Details of the rounding and aggregation thresholds can be found in Annex A.

<b>Field name</b>	<b>Salary.SALSBJ</b>
<b>Description</b>	JACS level subject code
<b>Field type</b>	Numeric
<b>Min/Max occurs</b>	1/1
<b>Field length</b>	3
<b>Parent entity</b>	Salary
<b>Derived from</b>	Destination of Leavers in Higher Education Survey (DLHE)
<b>Notes</b>	This field displays the subject area for the KIS course. For most KIS instances this will be a code at level 3 in the JACS hierarchy. For a subject based KIS it will be a level 2 code. A full description of how this is derived is in Annex A.

<b>Field name</b>	<b>Salary.LDLQ</b>
<b>Description</b>	Sector lower quartile salary for subject (40 months)
<b>Field type</b>	Numeric
<b>Min/Max occurs</b>	0/1
<b>Field length</b>	6
<b>Parent entity</b>	Employment
<b>Derived from</b>	Longitudinal Destination of Leavers in Higher Education Survey (LDLHE)
<b>Notes</b>	This field contains the lower quartile salary of students at all HE providers of the subject 40 months after graduation. The derivation of this field is described in Annex C.

<b>Field name</b>	<b>Salary.LDMED</b>
<b>Description</b>	Sector median salary for subject (40 months)
<b>Field type</b>	Numeric
<b>Min/Max occurs</b>	0/1
<b>Field length</b>	6
<b>Parent entity</b>	Employment
<b>Derived from</b>	Longitudinal Destination of Leavers in Higher Education Survey (LDLHE)
<b>Notes</b>	This field contains the median salary of students at all HE providers of the subject 40 months after graduation. The derivation of this field is described in Annex C.

<b>Field name</b>	<b>Salary.LDUQ</b>
<b>Description</b>	Sector upper quartile salary for subject (40 months)
<b>Field type</b>	Numeric

<b>Min/Max occurs</b>	0/1
<b>Field length</b>	6
<b>Parent entity</b>	Employment
<b>Derived from</b>	Longitudinal Destination of Leavers in Higher Education Survey (LDLHE)
<b>Notes</b>	This field contains the upper quartile salary of students at all HE providers of the subject 40 months after graduation. The derivation of this field is described in Annex C.

<b>Field name</b>	<b>Salary.LQ</b>
<b>Description</b>	Sector lower quartile salary for subject (6 months)
<b>Field type</b>	Numeric
<b>Min/Max occurs</b>	0/1
<b>Field length</b>	6
<b>Parent entity</b>	Salary
<b>Derived from</b>	Destination of Leavers in Higher Education Survey (DLHE)
<b>Notes</b>	This field contains the lower quartile salary of students at all HE providers of the subject 6 months after graduation. The derivation of this field is described in Annex C.

<b>Field name</b>	<b>Salary.MED</b>
<b>Description</b>	Sector median quartile salary for subject (6 months)
<b>Field type</b>	Numeric
<b>Min/Max occurs</b>	0/1
<b>Field length</b>	6
<b>Parent entity</b>	Salary
<b>Derived from</b>	Destination of Leavers in Higher Education Survey (DLHE)
<b>Notes</b>	This field contains the median salary of students at all HE providers of the subject 6 months after graduation. The derivation of this field is described in Annex C.

<b>Field name</b>	<b>Salary.UQ</b>
<b>Description</b>	Sector upper quartile salary for subject (6 months)
<b>Field type</b>	Numeric
<b>Min/Max occurs</b>	0/1
<b>Field length</b>	6
<b>Parent entity</b>	Salary
<b>Derived from</b>	Destination of Leavers in Higher Education Survey (DLHE)
<b>Notes</b>	This field contains the upper quartile salary of students at all HE providers of the subject 6 months after graduation. The derivation of this field is described in Annex C.

<b>Field name</b>	<b>Salary.INSTLQ</b>
<b>Description</b>	Course lower quartile salary (6 months)
<b>Field type</b>	Numeric
<b>Min/Max occurs</b>	0/1
<b>Field length</b>	6
<b>Parent entity</b>	Salary
<b>Derived from</b>	Destination of Leavers in Higher Education Survey (DLHE)
<b>Notes</b>	This field contains the lower quartile salary of students on the course 6 months after graduation. The derivation of this field is described in Annex C.

<b>Field name</b>	<b>Salary.INSTMED</b>
<b>Description</b>	Course median quartile salary for subject (6 months)
<b>Field type</b>	Numeric
<b>Min/Max occurs</b>	0/1

<b>Field length</b>	6
<b>Parent entity</b>	Salary
<b>Derived from</b>	Destination of Leavers in Higher Education Survey (DLHE)
<b>Notes</b>	This field contains the median salary of students on the course 6 months after graduation. The derivation of this field is described in Annex C.

<b>Field name</b>	<b>Salary.INSTUQ</b>
<b>Description</b>	Course upper quartile salary for subject (6 months)
<b>Field type</b>	Numeric
<b>Min/Max occurs</b>	0/1
<b>Field length</b>	6
<b>Parent entity</b>	Salary
<b>Derived from</b>	Destination of Leavers in Higher Education Survey (DLHE)
<b>Notes</b>	This field contains the upper quartile salary of students on the course 6 months after graduation. The derivation of this field is described in Annex C.

## NSS

<b>Entity name</b>	<b>NSS</b>
Description	This entity contains the National Student Survey (NSS) results.
Min/max occurs	0/3
Parent entity	KISCourse

The NSS entity contains the following additional fields which are provided from NSS:

<b>Field name</b>	<b>NSS.NSSPOP</b>
<b>Description</b>	Population
<b>Field type</b>	Numeric
<b>Min/Max occurs</b>	1/1
<b>Field length</b>	5
<b>Parent entity</b>	NSS
<b>Derived from</b>	National Student Survey (NSS)
<b>Notes</b>	This field displays the number of students in the population from which the NSS data is derived for the KIS course. A full description of how the populations are created, and the rounding methodology employed is in Annex A.

<b>Field name</b>	<b>NSS.NSSAGG</b>
<b>Description</b>	Aggregation level
<b>Field type</b>	Numeric
<b>Min/Max occurs</b>	1/1
<b>Field length</b>	2
<b>Parent entity</b>	NSS
<b>Derived from</b>	National Student Survey (NSS)
<b>Notes</b>	This field displays the aggregation level applied to the NSS data for the KIS course. Details of the rounding and aggregation thresholds can be found in Annex A.

<b>Field name</b>	<b>NSS.NSSBJ</b>
<b>Description</b>	JACS level subject code
<b>Field type</b>	Numeric
<b>Min/Max occurs</b>	1/1
<b>Field length</b>	3

<b>Parent entity</b>	NSS
<b>Derived from</b>	National Student Survey (NSS)
<b>Notes</b>	This field displays the subject area for the KIS course. For most KIS instances this will be a code at level 3 in the JACS hierarchy. For a subject based KIS it will be a level 2 code. A full description of how this is derived is in Annex A.

<b>Field name</b>	<b>NSS.Q1</b>
<b>Description</b>	NSS question
<b>Field type</b>	Numeric
<b>Min/Max occurs</b>	1/1
<b>Field length</b>	3
<b>Parent entity</b>	NSS
<b>Derived from</b>	National Student Survey (NSS)
<b>Notes</b>	This field shows the proportion of students who "agree" or "strongly agree" with question 1 on the NSS: "Staff are good at explaining things".

<b>Field name</b>	<b>NSS.Q2</b>
<b>Description</b>	NSS question
<b>Field type</b>	Numeric
<b>Min/Max occurs</b>	1/1
<b>Field length</b>	3
<b>Parent entity</b>	NSS
<b>Derived from</b>	National Student Survey (NSS)
<b>Notes</b>	This field shows the proportion of students who "agree" or "strongly agree" with question 2 on the NSS: "Staff have made the subject interesting".

<b>Field name</b>	<b>NSS.Q3</b>
<b>Description</b>	NSS question
<b>Field type</b>	Numeric
<b>Min/Max occurs</b>	1/1
<b>Field length</b>	3
<b>Parent entity</b>	NSS
<b>Derived from</b>	National Student Survey (NSS)
<b>Notes</b>	This field shows the proportion of students who "agree" or "strongly agree" with question 3 on the NSS: "Staff are enthusiastic about what they are teaching".

<b>Field name</b>	<b>NSS.Q4</b>
<b>Description</b>	NSS question
<b>Field type</b>	Numeric
<b>Min/Max occurs</b>	1/1
<b>Field length</b>	3
<b>Parent entity</b>	NSS
<b>Derived from</b>	National Student Survey (NSS)
<b>Notes</b>	This field shows the proportion of students who "agree" or "strongly agree" with question 4 on the NSS: "The course is intellectually stimulating".

<b>Field name</b>	<b>NSS.Q5</b>
<b>Description</b>	NSS question
<b>Field type</b>	Numeric
<b>Min/Max occurs</b>	1/1
<b>Field length</b>	3

<b>Parent entity</b>	NSS
<b>Derived from</b>	National Student Survey (NSS)
<b>Notes</b>	This field shows the proportion of students who "agree" or "strongly agree" with question 5 on the NSS: "The criteria used in marking have been clear in advance".

<b>Field name</b>	<b>NSS.Q6</b>
<b>Description</b>	NSS question
<b>Field type</b>	Numeric
<b>Min/Max occurs</b>	1/1
<b>Field length</b>	3
<b>Parent entity</b>	NSS
<b>Derived from</b>	National Student Survey (NSS)
<b>Notes</b>	This field shows the proportion of students who "agree" or "strongly agree" with question 6 on the NSS: "Assessment arrangements and marking have been fair".

<b>Field name</b>	<b>NSS.Q7</b>
<b>Description</b>	NSS question
<b>Field type</b>	Numeric
<b>Min/Max occurs</b>	1/1
<b>Field length</b>	3
<b>Parent entity</b>	NSS
<b>Derived from</b>	National Student Survey (NSS)
<b>Notes</b>	This field shows the proportion of students who "agree" or "strongly agree" with question 7 on the NSS: "Feedback on my work has been prompt".

<b>Field name</b>	<b>NSS.Q8</b>
<b>Description</b>	NSS question
<b>Field type</b>	Numeric
<b>Min/Max occurs</b>	1/1
<b>Field length</b>	3
<b>Parent entity</b>	NSS
<b>Derived from</b>	National Student Survey (NSS)
<b>Notes</b>	This field shows the proportion of students who "agree" or "strongly agree" with question 8 on the NSS: "I have received detailed comments on my work".

<b>Field name</b>	<b>NSS.Q9</b>
<b>Description</b>	NSS question
<b>Field type</b>	Numeric
<b>Min/Max occurs</b>	1/1
<b>Field length</b>	3
<b>Parent entity</b>	NSS
<b>Derived from</b>	National Student Survey (NSS)
<b>Notes</b>	This field shows the proportion of students who "agree" or "strongly agree" with question 9 on the NSS: "Feedback on my work has helped me clarify things I did not understand".

<b>Field name</b>	<b>NSS.Q10</b>
<b>Description</b>	NSS question
<b>Field type</b>	Numeric
<b>Min/Max occurs</b>	1/1
<b>Field length</b>	3



<b>Parent entity</b>	NSS
<b>Derived from</b>	National Student Survey (NSS)
<b>Notes</b>	This field shows the proportion of students who "agree" or "strongly agree" with question 10 on the NSS: "I have received sufficient advice and support with my studies".

<b>Field name</b>	<b>NSS.Q11</b>
<b>Description</b>	NSS question
<b>Field type</b>	Numeric
<b>Min/Max occurs</b>	1/1
<b>Field length</b>	3
<b>Parent entity</b>	NSS
<b>Derived from</b>	National Student Survey (NSS)
<b>Notes</b>	This field shows the proportion of students who "agree" or "strongly agree" with question 11 on the NSS: "I have been able to contact staff when I needed to".

<b>Field name</b>	<b>NSS.Q12</b>
<b>Description</b>	NSS question
<b>Field type</b>	Numeric
<b>Min/Max occurs</b>	1/1
<b>Field length</b>	3
<b>Parent entity</b>	NSS
<b>Derived from</b>	National Student Survey (NSS)
<b>Notes</b>	This field shows the proportion of students who "agree" or "strongly agree" with question 12 on the NSS: "Good advice was available when I needed to make study choices".

<b>Field name</b>	<b>NSS.Q13</b>
<b>Description</b>	NSS question
<b>Field type</b>	Numeric
<b>Min/Max occurs</b>	1/1
<b>Field length</b>	3
<b>Parent entity</b>	NSS
<b>Derived from</b>	National Student Survey (NSS)
<b>Notes</b>	This field shows the proportion of students who "agree" or "strongly agree" with question 13 on the NSS: "The timetable works efficiently as far as my activities are concerned".

<b>Field name</b>	<b>NSS.Q14</b>
<b>Description</b>	NSS question
<b>Field type</b>	Numeric
<b>Min/Max occurs</b>	1/1
<b>Field length</b>	3
<b>Parent entity</b>	NSS
<b>Derived from</b>	National Student Survey (NSS)
<b>Notes</b>	This field shows the proportion of students who "agree" or "strongly agree" with question 14 on the NSS: "Any changes in the course or teaching have been communicated effectively".

<b>Field name</b>	<b>NSS.Q15</b>
<b>Description</b>	NSS question
<b>Field type</b>	Numeric
<b>Min/Max occurs</b>	1/1

<b>Field length</b>	3
<b>Parent entity</b>	NSS
<b>Derived from</b>	National Student Survey (NSS)
<b>Notes</b>	This field shows the proportion of students who "agree" or "strongly agree" with question 15 on the NSS: "The course is well organised and is running smoothly".

<b>Field name</b>	<b>NSS.Q16</b>
<b>Description</b>	NSS question
<b>Field type</b>	Numeric
<b>Min/Max occurs</b>	1/1
<b>Field length</b>	3
<b>Parent entity</b>	NSS
<b>Derived from</b>	National Student Survey (NSS)
<b>Notes</b>	This field shows the proportion of students who "agree" or "strongly agree" with question 16 on the NSS: "The library resources and services are good enough for my needs".

<b>Field name</b>	<b>NSS.Q17</b>
<b>Description</b>	NSS question
<b>Field type</b>	Numeric
<b>Min/Max occurs</b>	1/1
<b>Field length</b>	3
<b>Parent entity</b>	NSS
<b>Derived from</b>	National Student Survey (NSS)
<b>Notes</b>	This field shows the proportion of students who "agree" or "strongly agree" with question 17 on the NSS: "I have been able to access general IT resources when I needed to".

<b>Field name</b>	<b>NSS.Q18</b>
<b>Description</b>	NSS question
<b>Field type</b>	Numeric
<b>Min/Max occurs</b>	1/1
<b>Field length</b>	3
<b>Parent entity</b>	NSS
<b>Derived from</b>	National Student Survey (NSS)
<b>Notes</b>	This field shows the proportion of students who "agree" or "strongly agree" with question 18 on the NSS: "I have been able to access specialised equipment, facilities or rooms when I needed to".

<b>Field name</b>	<b>NSS.Q19</b>
<b>Description</b>	NSS question
<b>Field type</b>	Numeric
<b>Min/Max occurs</b>	1/1
<b>Field length</b>	3
<b>Parent entity</b>	NSS
<b>Derived from</b>	National Student Survey (NSS)
<b>Notes</b>	This field shows the proportion of students who "agree" or "strongly agree" with question 19 on the NSS: "The course has helped me present myself with confidence".

<b>Field name</b>	<b>NSS.Q20</b>
<b>Description</b>	NSS question
<b>Field type</b>	Numeric
<b>Min/Max occurs</b>	1/1

<b>Field length</b>	3
<b>Parent entity</b>	NSS
<b>Derived from</b>	National Student Survey (NSS)
<b>Notes</b>	This field shows the proportion of students who "agree" or "strongly agree" with question 20 on the NSS: "My communication skills have improved".

<b>Field name</b>	<b>NSS.Q21</b>
<b>Description</b>	NSS question
<b>Field type</b>	Numeric
<b>Min/Max occurs</b>	1/1
<b>Field length</b>	3
<b>Parent entity</b>	NSS
<b>Derived from</b>	National Student Survey (NSS)
<b>Notes</b>	This field shows the proportion of students who "agree" or "strongly agree" with question 21 on the NSS: "As a result of the course, I feel confident in tackling unfamiliar problems".

<b>Field name</b>	<b>NSS.Q22</b>
<b>Description</b>	NSS question
<b>Field type</b>	Numeric
<b>Min/Max occurs</b>	1/1
<b>Field length</b>	3
<b>Parent entity</b>	NSS
<b>Derived from</b>	National Student Survey (NSS)
<b>Notes</b>	This field shows the proportion of students who "agree" or "strongly agree" with question 22 on the NSS (or Q28 for NHNSS): "Overall, I am satisfied with the quality of the course".

## NHSNSS

<b>Entity name</b>	<b>NHSNSS</b>
Description	This entity contains the results for the questions on the NSS for students on NHS funded courses.
Min/max occurs	0/3
Parent entity	KISCourse

The NHSNSS entity contains the following additional fields which are provided from National Student Survey:

<b>Field name</b>	<b>NHSNSS.NHSPOP</b>
<b>Description</b>	Population
<b>Field type</b>	Numeric
<b>Min/Max occurs</b>	1/1
<b>Field length</b>	5
<b>Parent entity</b>	NHSNSS
<b>Derived from</b>	National Student Survey (NSS)
<b>Notes</b>	This field displays the number of students in the population from which the NHSNSS data is derived for the KIS course. A full description of how the populations are created, and the rounding methodology employed is in Annex A.

<b>Field name</b>	<b>NHSNSS.NHSAGG</b>
<b>Description</b>	Aggregation level
<b>Field type</b>	Numeric

<b>Min/Max occurs</b>	1/1
<b>Field length</b>	2
<b>Parent entity</b>	NHSNSS
<b>Derived from</b>	National Student Survey (NSS)
<b>Notes</b>	This field displays the aggregation level applied to the NHSNSS data for the KIS course. Details of the rounding and aggregation thresholds can be found in Annex A.

<b>Field name</b>	<b>NHSNSS.NHSSBJ</b>
<b>Description</b>	JACS level subject code
<b>Field type</b>	Numeric
<b>Min/Max occurs</b>	1/1
<b>Field length</b>	3
<b>Parent entity</b>	NHSNSS
<b>Derived from</b>	National Student Survey (NSS)
<b>Notes</b>	This field displays the subject area for the KIS course. For most KIS instances this will be a code at level 3 in the JACS hierarchy. For a subject based KIS it will be a level 2 code. A full description of how this is derived is in Annex A.

<b>Field name</b>	<b>NHSNSS.Q1</b>
<b>Description</b>	NHS question for NSS
<b>Field type</b>	Numeric
<b>Min/Max occurs</b>	1/1
<b>Field length</b>	3
<b>Parent entity</b>	NHSNSS
<b>Derived from</b>	National Student Survey (NSS)
<b>Notes</b>	This field shows the proportion of students on NHS funded courses who "agree" or "strongly agree" with question 22 on the NSS (NHS): "I received sufficient preparatory information prior to my placement(s) ".

<b>Field name</b>	<b>NHSNSS.Q2</b>
<b>Description</b>	NHS question for NSS
<b>Field type</b>	Numeric
<b>Min/Max occurs</b>	1/1
<b>Field length</b>	3
<b>Parent entity</b>	NHSNSS
<b>Derived from</b>	National Student Survey (NSS)
<b>Notes</b>	This field shows the proportion of students on NHS funded courses who "agree" or "strongly agree" with question 23 on the NSS (NHS): "I was allocated placement(s) suitable for my course".

<b>Field name</b>	<b>NHSNSS.Q3</b>
<b>Description</b>	NHS question for NSS
<b>Field type</b>	Numeric
<b>Min/Max occurs</b>	1/1
<b>Field length</b>	3
<b>Parent entity</b>	NHSNSS
<b>Derived from</b>	National Student Survey (NSS)
<b>Notes</b>	This field shows the proportion of students on NHS funded courses who "agree" or "strongly agree" with question 24 on the NSS (NHS): "I received appropriate supervision on my placement(s)".

<b>Field name</b>	<b>NHSNSS.Q4</b>
<b>Description</b>	NHS question for NSS

<b>Field type</b>	Numeric
<b>Min/Max occurs</b>	1/1
<b>Field length</b>	3
<b>Parent entity</b>	NHSNSS
<b>Derived from</b>	National Student Survey (NSS)
<b>Notes</b>	This field shows the proportion of students on NHS funded courses who "agree" or "strongly agree" with question 25 on the NSS (NHS): "I was given opportunities to meet my required practice learning outcomes/competences".

<b>Field name</b>	<b>NHSNSS.Q5</b>
<b>Description</b>	NHS question for NSS
<b>Field type</b>	Numeric
<b>Min/Max occurs</b>	1/1
<b>Field length</b>	3
<b>Parent entity</b>	NHSNSS
<b>Derived from</b>	National Student Survey (NSS)
<b>Notes</b>	This field shows the proportion of students on NHS funded courses who "agree" or "strongly agree" with question 26 on the NSS (NHS): "My contribution during placement(s) as part of the clinical team was valued ".

<b>Field name</b>	<b>NHSNSS.Q6</b>
<b>Description</b>	NHS question for NSS
<b>Field type</b>	Numeric
<b>Min/Max occurs</b>	1/1
<b>Field length</b>	3
<b>Parent entity</b>	NHSNSS
<b>Derived from</b>	National Student Survey (NSS)
<b>Notes</b>	This field shows the proportion of students on NHS funded courses who "agree" or "strongly agree" with question 27 on the NSS (NHS): "My practice supervisor(s) understood how my placement(s) related to the broader requirements of my course".

## Annex A: Rounding and aggregation

In order to avoid the risk of individual students being identified from parts of the Unistats dataset, some elements are rounded and/or aggregated with data from other, similar, students. In some cases it is not possible to publish parts of the Unistats dataset, owing to the small number of students in the population, or simply because some data were not collected (for example for new courses, and some courses provided by private providers). The lack of information about a particular course should not be used to draw negative inferences about the quality of the course. For each data item, data will be published at the first level in the list below where the population meets the required publication threshold:

- 1) KISCOURSE level – most recent year's data (AGG=14)
- 2) KISCOURSE level – most recent two years' data aggregated (AGG=24)
- 3) JACS level 3 (e.g. aerospace engineering) – most recent year's data (AGG=13)
- 4) JACS level 3 – most recent two years' data aggregated (AGG=23)
- 5) JACS level 2 (e.g. mechanically based engineering) – most recent year's data (AGG=12)
- 6) JACS level 2 – most recent two years' data aggregated (AGG=22)
- 7) JACS level 1 (e.g. engineering and technology) – most recent year's data (AGG=11)
- 8) JACS level 1 – most recent two years' data aggregated (AGG=21)

For all items, a population of at least 10 students is required for the data to be published. Additionally, responses to the NSS are only published if at least 50 per-cent of the eligible population has responded.

All NSS data is published to the nearest percentage point. All other data are published to the nearest percentage point, unless there are at least 10 and less than 52.5 students in the population, in which case the data are rounded to the nearest five percentage points.

Salary information is only included if at least 50 per-cent of those in full time employment have provided the information. The salary data itself is not rounded, though respondents to the survey only give their salary to the nearest £1000.

In aggregations, all level 3 subjects returned in the KIS data plus any level 3 subjects which fall within a level 2 subject that are returned in the KIS are included, unless that level 3 subject was not returned to HESA in the latest year of the student return.

The JACS subject hierarchy can be found at:

[http://www.hesa.ac.uk/includes/C15061\\_resources/download/NSS\\_JACS3\\_subject\\_codes\\_for\\_Web\\_page.xlsx](http://www.hesa.ac.uk/includes/C15061_resources/download/NSS_JACS3_subject_codes_for_Web_page.xlsx)

## Annex B: Employment Statistics

The employment statistics included in the EMPLOYMENT entity of the Unistats data are taken from the Destination of Leavers in Higher Education Survey (DLHE), which surveys students six months after their course ends. It seeks to establish whether students are working (and if so what sort of work they are doing) and/or undertaking further study. Further information about the DLHE can be found at [www.hesa.ac.uk/C13018](http://www.hesa.ac.uk/C13018).

The data within the EMPLOYMENT entity are subject to aggregation and rounding as described in Annex A. Only students who meet the following criteria are included in the statistics:

- Studying one of the following undergraduate qualification codes (the coding frame is described at <http://www.hesa.ac.uk/C13051/A/COURSEAIM.html>): M22, M26, M28, H00, H11, H16, H18, H22, H23, H50, I00, I11, I16, H41, H42, H43, H60, H61, H62, H70, H71, H78, H79, H80, H81, H88, I60, I61, I70, I71, I74, I79, I80, I81, J10, J16, J20, J26, J30, J41, J42, J43, J45, J80, C20, C30, C41, C42, C43, C77, C78, C80
- Who haven't died (RSNEND does not equal 05)
- Are not recorded as dormant on the student record (MODE not 63 or 64)
- Are not studying abroad (LOCSDY='S')
- Have a UK or EU domicile
- Left the course between 1 August 2013 and 31 July 2014 (where two years' data are aggregated, students on the earlier year will have left their course between 1 August 2012 and 31 July 2013)
- Have not declined to complete the survey

The elements within the EMPLOYMENT entity are derived according to the responses on the DLHE survey as follows. Where 2012/13 or 2011/12 data is used, the data in the EMPLOYMENT entity are calculated using the XACTIVE02<sup>1</sup> derived field from the HESA DLHE record as follows:

Element	XACTIV02 (derived from ALLACT and MIMPACT in the DLHE record)
BOTH	03, 04
ASSUNEMP	07, 08
WORKSTUDY	This contains the sum of WORK, STUDY and BOTH
STUDY	05, 06
WORK	01, 02
NOAVAIL	09

A full definition of the Student.ALLACT field can be found at <http://www.hesa.ac.uk/C13018/A/ALLACT.html>

A full definition of the Student.MIMPACT field can be found at <http://www.hesa.ac.uk/C13018/A/MIMPACT.html>

<sup>1</sup> The specification for XACTIV02 can be found at <http://www.hesa.ac.uk/content/view/3160/>

## Annex C: Derivation of salary location adjusted quartiles

### Overview

The location adjusted quartiles and medians for salary on the Unistats site are an attempt to calculate quartiles and medians using sector level data such that the proportion of leavers working in each region is the same for the sector figures as it is for the HE provider, this is achieved by weighting each response rather than taking a sample. For example, if 50% of the students in a given HE provider and subject go on to work in London whereas over the sector as a whole 20% work in London in calculating the sector figures students working in London would be weighted as 2.5 ( $50\% \div 20\%$ ).

This document details and provides an example of how the salary location adjusted quartiles presented on the Unistats website are produced.

### Methodology

In order to create the location adjustment it is necessary to obtain the total number of students<sup>1</sup> for three different populations. These are HE provider, sector and regional sector salary. The HE provider total is the total number of students for each different combination of HE provider, subject, mode, level and region. The sector total comes from the same grouping as used previously but without HE provider. For regional sector salary the total number of students is calculated for each combination of salary, mode, level, subject and region.

Next a weight is produced by dividing the HE providers total number of students by the total number of students in the sector for each grouping of subject, mode, level and region. This weight is then multiplied by the regional sector salary total number of students for each combination of subject, mode, level, region and salary to create an HE provider weighted number of students.

The total weighted HE provider student number is the sum of the weighted HE provider total for each combination of HE provider, subject, mode and level. The quartile points are produced by taking 25%, 50% and 75% of the HE provider weighted total as the lower quartile, median and upper quartile points respectively.

The data is sorted by HE provider, subject, mode, level and salary so that the salary values are ascending. The HE provider weighted totals for each combination are added until they reach the lower quartile point. When the sum of the sector weighted total is greater than or equal to the lower quartile point and the previous total is less than the lower quartile point then the salary in that observation is recorded as the lower quartile. The HE provider weighted totals continue to be summed and the same methodology applies for the median and upper quartiles.

An example of how the location adjusted salary quartiles are produced is shown below.



**Worked example**

Take the following sample of students in table 1 who are studying the same subject with the same mode and level of study. Please note that before a location adjustment takes place all of the missing salary observations are removed and the salary figures are rounded to the nearest thousand.

**Table 1 – An example list of students**

HE provider	Region	Salary	Number of students
1	A	10,000	1
1	B	20,000	3
1	A	20,000	4
1	B	23,000	5
1	C	30,000	1
2	A	15,000	2
2	B	20,000	3
2	B	22,000	4
2	A	29,000	2
2	C	35,000	3
2	C	25,000	1
2	A	24,000	1

After the three different summaries have been calculated the weighted student numbers can be made and table 2 shows an example of these summaries and weighted student numbers using the data given in table 1.

**Table 2 – Summaries and weighted student numbers for the data shown in Table 1**

HE provider	Region	Salary	HE provider FPE	Sector FPE	Regional Sector Salary FPE	Weighted FPE	HE provider weighted FPE
1	A	10,000	5	10	1	0.5	50.0
1	B	20,000	8	15	6	0.5	320.0
1	A	20,000	5	10	4	0.5	200.0
1	B	23,000	8	15	5	0.5	266.7
1	C	30,000	1	5	1	0.2	20.0
2	A	15,000	5	10	2	0.5	100.0
2	B	20,000	7	15	6	0.5	280.0
2	B	22,000	7	15	4	0.5	186.7
2	A	24,000	5	10	1	0.5	50.0
2	C	25,000	4	5	1	0.8	80.0
2	A	29,000	5	10	2	0.5	100.0
2	C	35,000	4	5	3	0.8	240.0

Finally, table 3 is an example of how the quartile points are used to determine which salary will be used for the lower quartile, median and upper quartile.

**Table 3 - Methodology used when calculating which salaries produce the quartiles**

HE provider	Salary	Previous weight	Total weight	Lower quartile point	Median point	Upper quartile point	Lower quartile	Median	Upper quartile	HE provider total FPE
1	10,000	0.0	50.0	214.2	428.3	642.5	0	0	0	856.7
1	20,000	50.0	370.0	214.2	428.3	642.5	20,000	0	0	856.7
1	20,000	370.0	570.0	214.2	428.3	642.5	20,000	20,000	0	856.7
1	23,000	570.0	836.7	214.2	428.3	642.5	20,000	20,000	23,000	856.7
1	30,000	836.7	856.7	214.2	428.3	642.5	20,000	20,000	23,000	856.7
2	15,000	0.0	100.0	259.2	518.3	777.5	0	0	0	1,036.7
2	20,000	100.0	380.0	259.2	518.3	777.5	20,000	0	0	1,036.7
2	22,000	380.0	566.7	259.2	518.3	777.5	20,000	22,000	0	1,036.7
2	24,000	566.7	616.7	259.2	518.3	777.5	20,000	22,000	0	1,036.7
2	25,000	616.7	696.7	259.2	518.3	777.5	20,000	22,000	0	1,036.7
2	29,000	696.7	796.7	259.2	518.3	777.5	20,000	22,000	29,000	1,036.7
2	35,000	796.7	1,036.7	259.2	518.3	777.5	20,000	22,000	29,000	1,036.7