



# CURRICULUM CONSULTATION PHASE TWO SUMMARY OF RESPONSES

RACHEL WILKES



**contact details**

HESA

95 Promenade

Cheltenham

GL50 1HZ

E [liaison@hesa.ac.uk](mailto:liaison@hesa.ac.uk)

T +44 (0) 1242 211 144

W [www.hesa.ac.uk](http://www.hesa.ac.uk)

Higher Education Statistics Agency Limited is a company limited by guarantee, registered in England at 95 Promenade, Cheltenham, GL50 1HZ. Registered No. 02766993. Registered Charity No. 1039709. Certified to ISO 27001. The members are Universities UK and GuildHE.

# CONTENTS

Curriculum consultation phase two – summary of responses .....	3
Question 5. Which option would you prefer to use for the majority of your students? .....	3
Question 6. Do any other providers have a similar problem with the ITT accreditation codes? .....	4

## CURRICULUM CONSULTATION PHASE TWO – SUMMARY OF RESPONSES

The second phase of the Data Futures Curriculum consultation opened on 2 October 2019 and closed on 18 October 2019. In total we received 66 responses to the consultation; 62 from providers and 4 from other organisations (software suppliers in this case). This paper summarises the responses we received and where relevant makes HESA's recommendations based on the results. These recommendations were made to our Statutory Customers and will be taken forward in the data model. Any next steps are actions on HESA to progress in the coming months.

The table below shows a breakdown of the responses received; providers split by country and also other organisations.

Country	Responses (%)
England	70%
Scotland	15%
Wales	8%
Northern Ireland	2%
Software suppliers	6%

Question 5. Which option would you prefer to use for the majority of your students?

Responses	% of total responses
Amended option B	86%
Original option B	14%

The majority of respondents agreed that the amended option B would give them much greater flexibility, be more efficient and would require less set up in their student record systems. There were comments around this meaning that fewer items of data were being maintained, this would be less duplication and there would be a higher accuracy in the return.

One provider commented that this proposal doesn't address the issues of reporting data items in 12-month blocks, which was their fundamental concern.

A number of providers also commented about PGR students and fully flexible courses, and indicated their preference for this to remain as the suggested option A. They also asked for more information on this.

Of the providers who preferred original option B most indicated that this more closely aligned with the way the data is currently set up in their student record system. A few commented that they would be ok with the amended option B, so long as they could continue to hold it in their systems in the original option B way.

A couple of providers asked us to redo all the scenarios based on the amended option B. We will be progressing with this activity next and expect it to use this as the basis for some more permanent guidance in Data Futures specification.

**Recommendation 1: Amended option B will be the curriculum model for the majority of students in Data Futures. Postgraduate Research students and fully flexible courses will need to be considered separately.**

Question 6. Do any other providers have a similar problem with the ITT accreditation codes?

Responses	% of total responses
Not applicable	55%
No	23%
Yes	23%

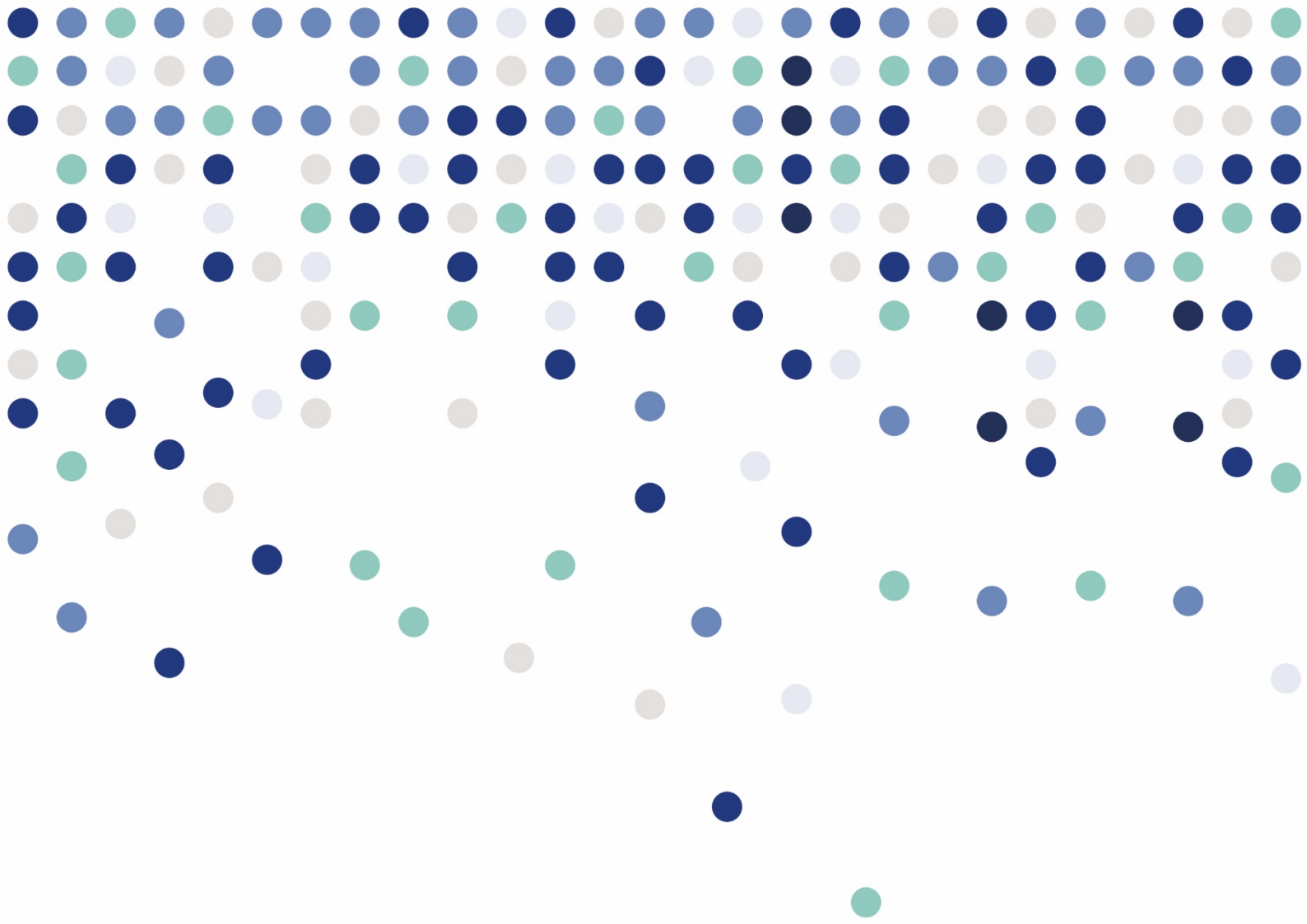
Most providers answered not applicable to this question, as their providers were either in other countries or don't have ITT courses.

Of those who have ITT courses, there was a pretty even split as to the responses. Half said they have ITT courses set up as described in the question (split by primary / secondary, but not the specific ITT phase/scopes) and the other half saying their courses are split by ITT phase/scopes.

Therefore, HESA will need to investigate how we enable providers to return the data to match how they hold it in their student record systems.

**Next steps 2: HESA to investigate how ITT phase/scopes are returned to cater for the scenario raised by a provider.**





**XXX contact details**

HESA

95 Promenade

Cheltenham

GL50 1HZ

E [xxx@hesa.ac.uk](mailto:xxx@hesa.ac.uk)

T +44 (0) 1242 XXX XXX

W [www.hesa.ac.uk](http://www.hesa.ac.uk)

