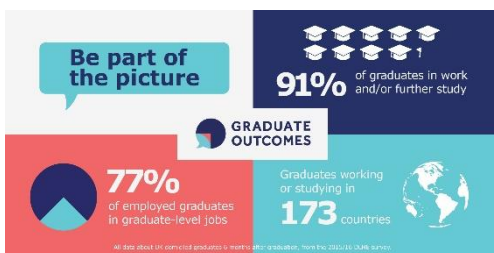


## King's Careers & Employability, King's College London

### Graduate Outcomes Survey Alumni core messaging

For more information, please contact Dr Kate Daubney, Head of King's Careers & Employability, [kate.daubney@kcl.ac.uk](mailto:kate.daubney@kcl.ac.uk)

10-11 MONTHS: Using HESA Promo 1 graphic – nb GRAPHIC WILL NEED EDITING FOR FIGURES



Hello from King's!

Whatever you are doing since you finished your degree at King's, we hope you are continuing to learn, discover and be fulfilled in your career. We're really interested in your story of life after King's, and most importantly it helps students on your course right now understand all the different things they can go on to do when they finish, as well as inspiring future students at King's. So to find out about what you are doing now, the Higher Education Statistics Agency (HESA) will be getting in touch with you in a few months' time to ask you to complete the [Graduate Outcomes Survey](#), online or by phone.

To make it easier for you to tell us your story, it would really help if you can keep your contact details up to date. If you are registered with the Alumni Office, then you can always update your contact details through their [portal](#).

You can also keep a graduate profile in [King's CareerConnect](#) for up to two years after you finish your course, and by doing so you can continue to take advantage of the services provided by King's Careers & Employability to help you decide and achieve your career goals during that time. So if we can help you with your career plans, please drop us a line, find us on social media, or give us a ring.

If you do not want to register with either of those two communities, you can also send us your contact details directly through this [link](#).

Either way, please keep in touch. We look forward to hearing your story!