



Product Specification Sheet

Progression through HE: University & Workplace Outcomes

This document details information on the data sources and each individual chart, table or graph contained within the product.

Data sources

[HESA Student Data](#)

[Destination of Leavers from Higher Education Survey](#)

HESA Student Data

All Student data relates to first degree entrants and graduates.

Please note this report does not include students studying at Alternative Providers except the University of Buckingham.

Destinations of Leavers in Higher Education (DLHE) Survey

The latest DLHE survey was conducted for 2016/17 leavers. In a change to methodology, its successor, [Graduate Outcomes](#), will not survey 2017/18 leavers until 15 months after graduation so will not be available until 2020.

The DLHE survey asked leavers what they were doing on a reference (census) date roughly six months after graduation. The [response rate](#) to the survey was almost 80% for UK domiciled students in 2016/17.

Notes

The product is in Tableau format, bringing the best of data visualisations and analysis to you. If you do not have a Tableau licence, you will need to download Tableau Reader 10.5 or above (free of charge).

The years indicated refer to the year of entry or exit from university, **not** the year they left your institution.

Unless stated as 'your students' the data/chart will show figures for Your School, Your Competitors and the Total UK. You can choose 3-5 competitors and their numbers will be aggregated.

The data behind the graphs and charts can be downloaded into Excel, should you wish to.

Numbers will be rounded to the nearest 5 i.e. 0, 1, 2 will be rounded to 0. Percentages will be suppressed if the base total is less than 22.5. Averages are suppressed if the base total is less than 7. See [HESA Rounding and Suppression](#) for more detail.

The numbers in the images below have been rounded – this will not be the case with the purchased product.



HESA

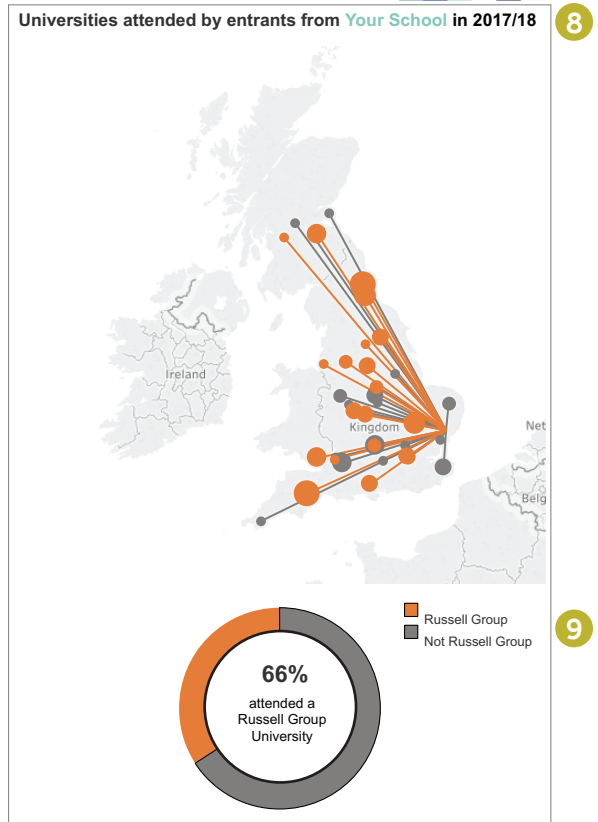


Worksheet 1

Overview i

Your School Competitors Total UK

HESA



- 1 Number of entrants**
Number of your students starting undergraduate study at university that year.
- 2 STEM entrants enrollments**
Percentage of students starting undergraduate study at university in a STEM subject that year.
- 3 Average tariff**
Average tariff of students entering into university that year.
- 4 1st/2:1 graduates**
Percentage of students graduating with these degrees in that year. NB. Due to new tariff system, until 2016/17 only.
- 5 Work and/or further study**
Percentage of DLHE respondents in work and/or further study.

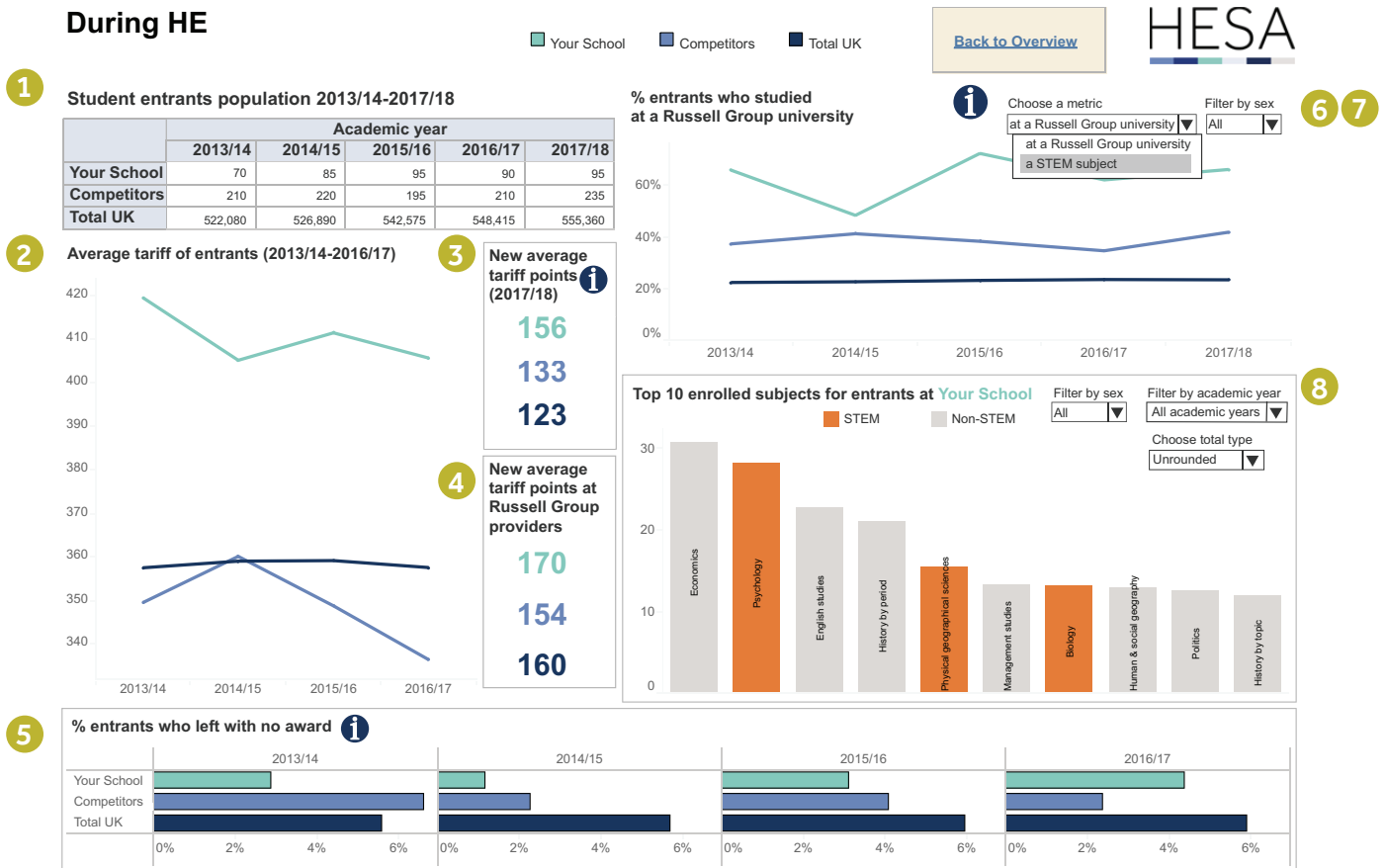
- 6 Professional employment (SOC Groups 1-3)**
Percentage of DLHE respondents in work in professional employment.
- 7 Average salary 2016/17**
Average salary of DLHE respondents in full-time paid employment, who graduated that year.
- 8 Destinations map**
A map pinpointing where your students entered into university in 2017/18.
- 9 Russell Group attendance pie chart**
The entry percentage of your students into Russell Group universities in 2017/18.

The metrics in the table are:

Performance (5 academic years) - graph
Change from previous year - % change (% difference).

Worksheet 2

During HE

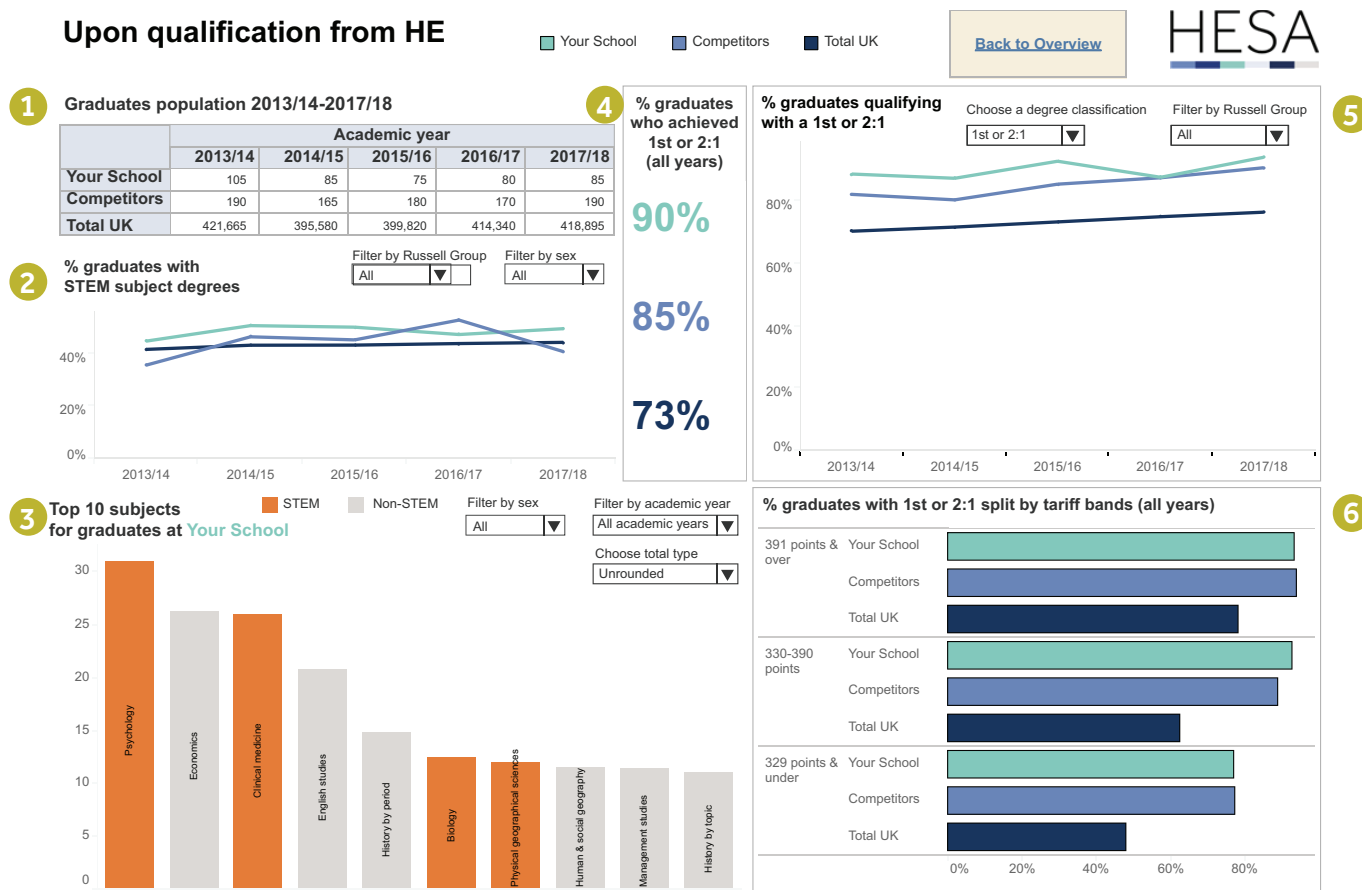


- 1 Student population 2013/14 – 2017/18**
Number of students who entered into university in this academic year.
- 2 Average tariff of entrants (2013/14 - 2016/17)**
Average tariff of your students who entered into university that year.
- 3 [New average tariff points \(2017/18\)](#)**
The average tariff of students entering into university under the new tariff points system.
- 4 [New Average tariff points at Russell Group providers](#)**
The average tariff of students entering into university at a Russell Group university under the new tariff points system in 2017/18.
- 5 % students who left with no award**
The percentage of students who did not return to study their original degree (they may have changed course/university) in a subsequent year. NB. This is recorded a year in arrears.

- 6 % entrants who studied a STEM subject**
The percentage of students entering into university in a STEM subject, filtered by sex.
- 7 % entrants who studied at a Russell Group University**
The percentage of students entering into university at a Russell Group institution, filtered by sex.
- 8 Top 10 enrolled subjects for entrants at Your school**
Number of students starting a degree by subject, with a STEM marker, filtered by year and sex. (Rounded/Unrounded)

Worksheet 3

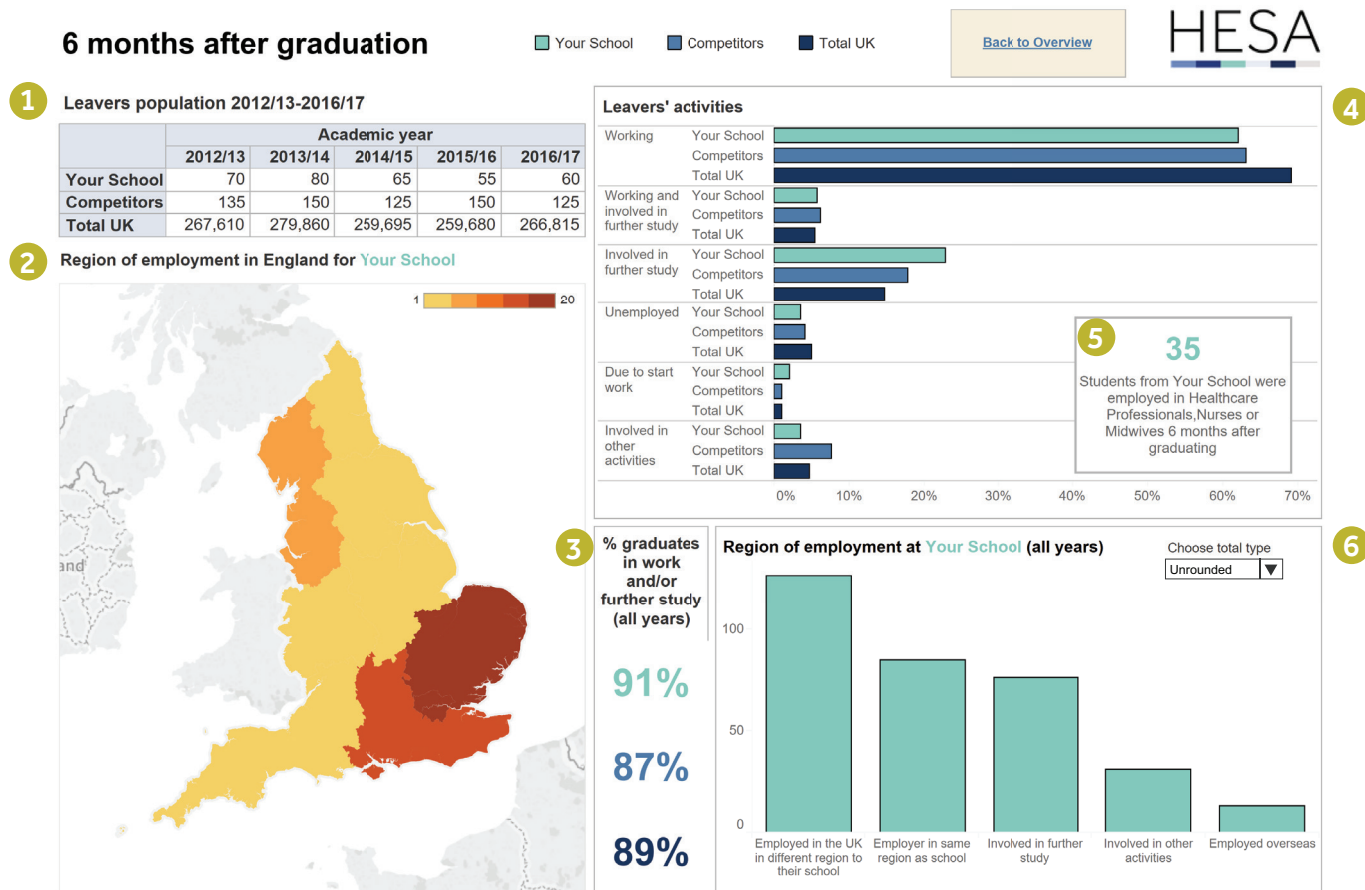
Upon qualification from HE



- 1 Graduates population 2013/14 – 2017/18**
Number of students who graduated in this academic year.
- 2 % graduates with STEM subject degrees**
Number of students graduating in a STEM subject, filtered by Russell Group and sex.
- 3 Top 10 subjects for graduates**
Number of students graduating by subject, with a STEM marker, filtered by year and sex. (Rounded/Unrounded)

- 4 % graduates who achieved 1st & 2:1**
Percentage of students who graduated with a 1st or 2:1 over the last 5 academic years.
- 5 % graduates qualifying with 1st or 2:1**
The percentage of students graduating by degree classification, with a Russell Group filter.
- 6 % graduates with 1st or 2:1 by tariff bands**
The percentage of graduates with a 1st or 2:1 over the last 5 academic years, split by tariff entry bands.

Worksheet 4



1 **Leavers population 2012/13 – 2016/17**
Number of graduates who completed the DLHE survey.

2 **Region of employment in England for your school**
Number of your graduates over the last 5 surveys, in employment located in England.

3 **% graduates in work and/or further study**
The percentage of graduates in work and/or further study over the last 5 surveys.

4 **Leavers activities**
The percentage of graduates' activities over the last 5 surveys.

5 **Biggest employment sector**
Employment sector which has employed the largest number of your graduates surveyed over the last 5 surveys, from the following areas: Engineering; Natural/Social Sciences; Teaching & Education; Healthcare Professionals, Nurses or Midwives.

6 **Region of Employment**
The number of your graduates by activity, and employment geography, over the last 5 surveys.

Worksheet 5

6 months after graduation - employment

[Back to Overview](#)

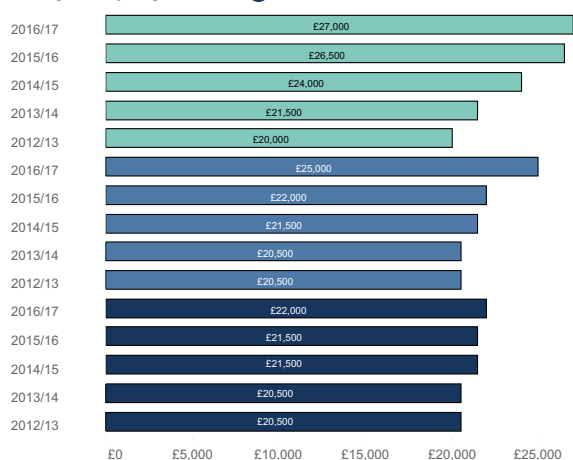


1 Leavers population in employment 2012/13-2016/17 i

	Academic year				
	2012/13	2013/14	2014/15	2015/16	2016/17
Your School	45	60	40	45	40
Competitors	85	105	90	100	85
Total UK	199,815	211,890	195,970	190,495	195,955

■ Your School
 ■ Competitors
 ■ Total UK

2 Average salary of graduates* i

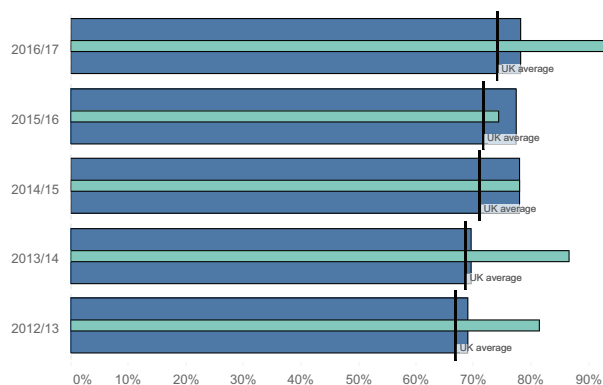


3 % of graduates* earning over £25,000 (all years)

31%
 27%
 24%

*in full-time paid employment

Professional employment i



Employment industries of Your School leavers



1 Leavers population in employment 2013/13 - 2016/17
 The number of graduates surveyed who are in employment.

2 Average salary of graduates (in full-time paid employment)
 The average salary of students by year in full-time employment.

3 % graduates earning over £25,000
 The percentage of graduates in full-time paid employment earning over £25,000.

4 Professional employment (SOC Groups 1-3)
 The percentage of students in professional employment of all those employed.

5 Employment industries of your school leavers
 The employment industries of graduates in employment over the last 5 surveys, by indication (larger the font, larger the cohort).